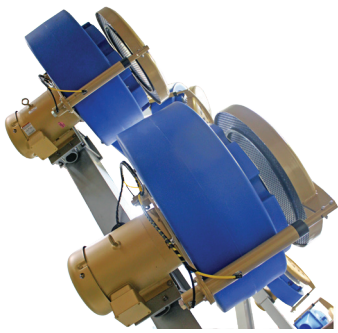
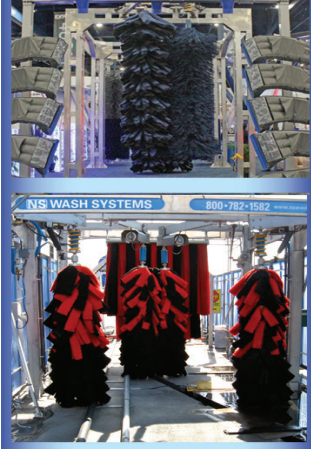


SYSTEMS AIR 10-D & 10-P

PARTS MANUAL



NS CORPORATION

Quality Equipment Since 1961

Revision: **2**

Date: **05/2019**

Approved by: **CA**



Contents

AF-303TC

Features _____ 4

AF-505TC

Isometric _____ 5

AIR-10-D

Component Parts _____ 6

AIR-10-P

Component Parts _____ 7

BLOWER BRACKETS

Assembly Part# 960-0014 _____ 8

10HP BLOWER

Hardware _____ 9

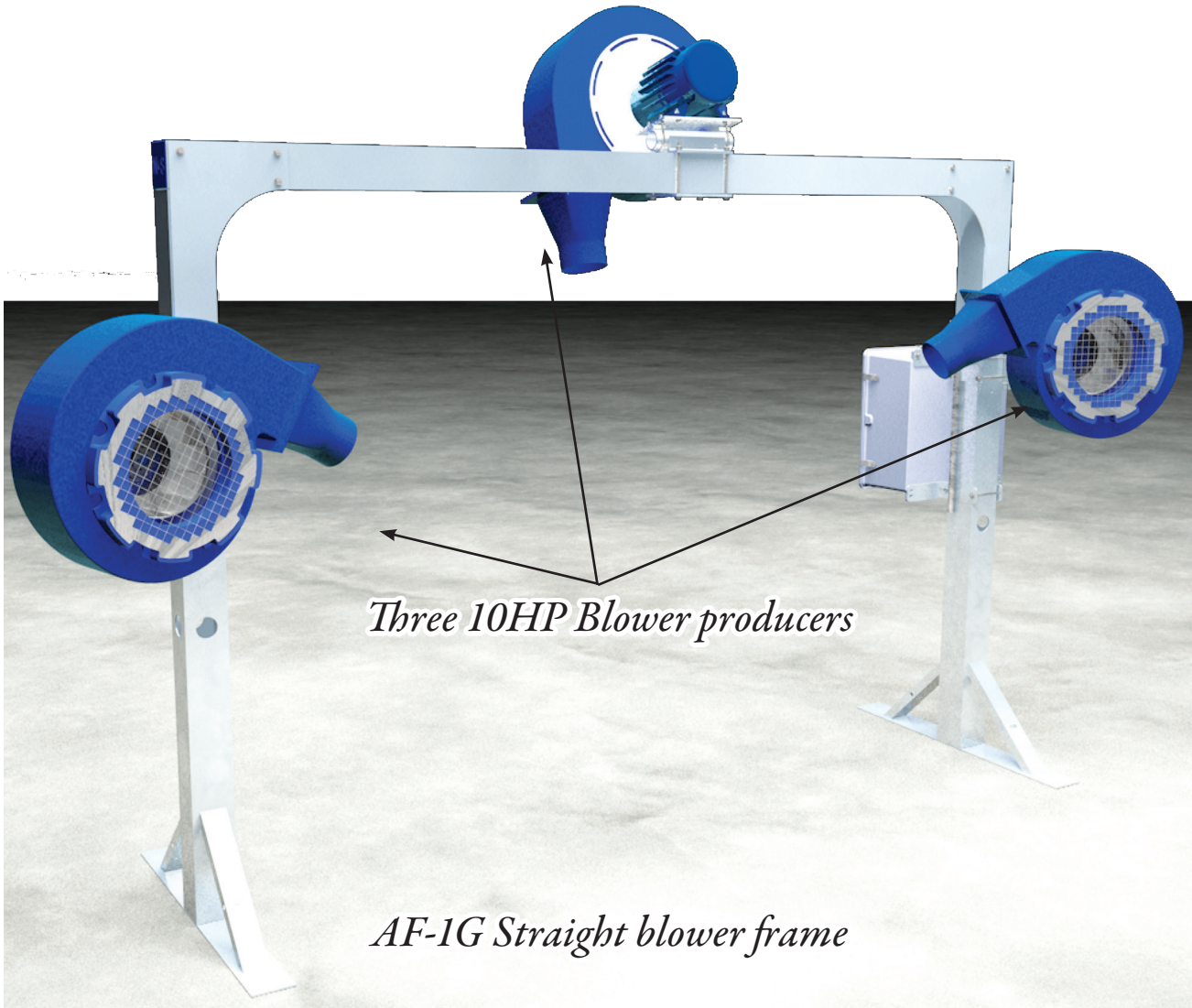
ORDER FORM

Fill and Fax _____ 10

PART NUMBERS

AF-303TC

Features



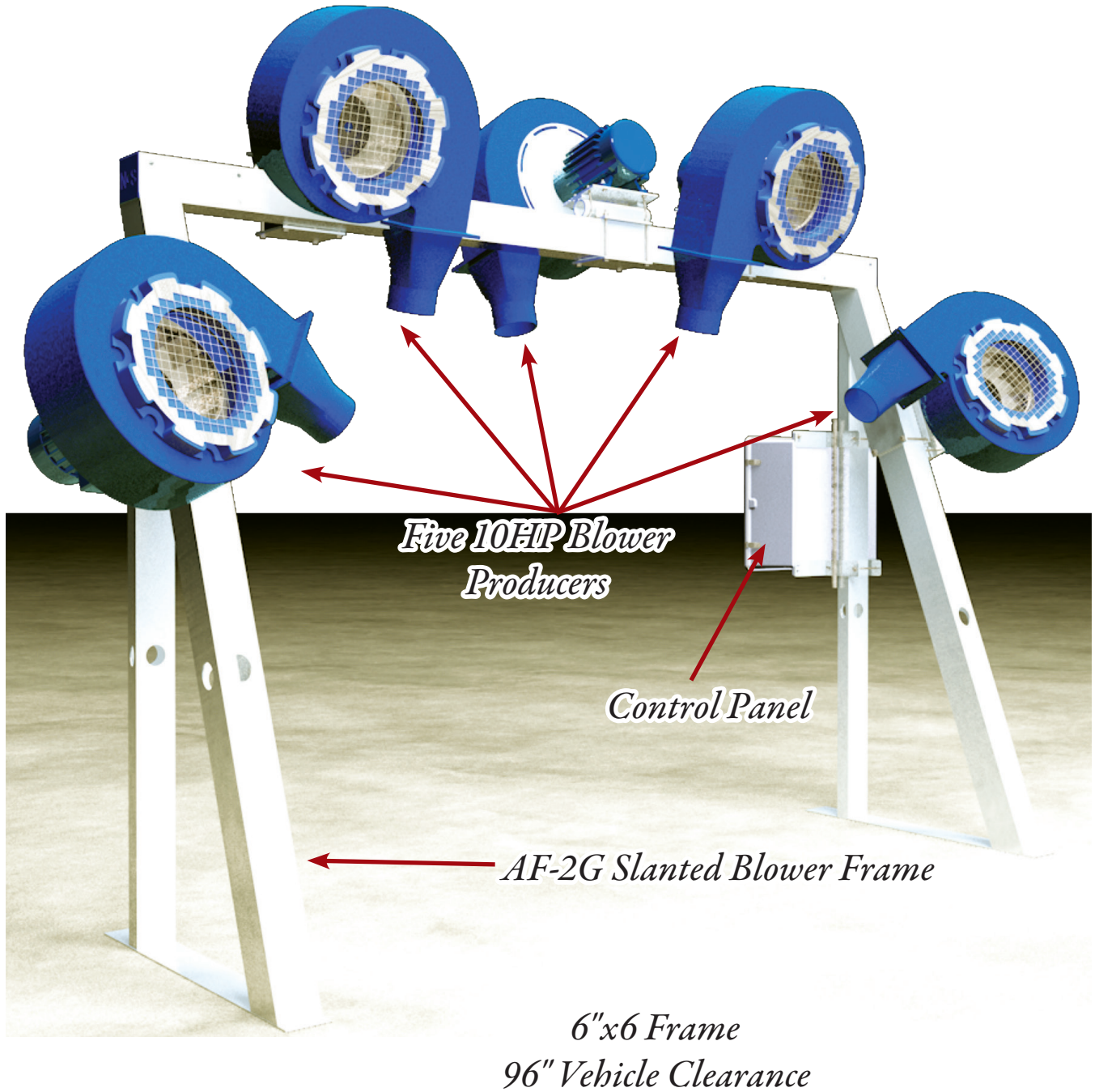
Three 10HP Blower producers

AF-1G Straight blower frame

6"x6" frame with a 96" vehicle clearance

AF-505TC

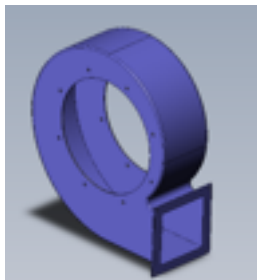
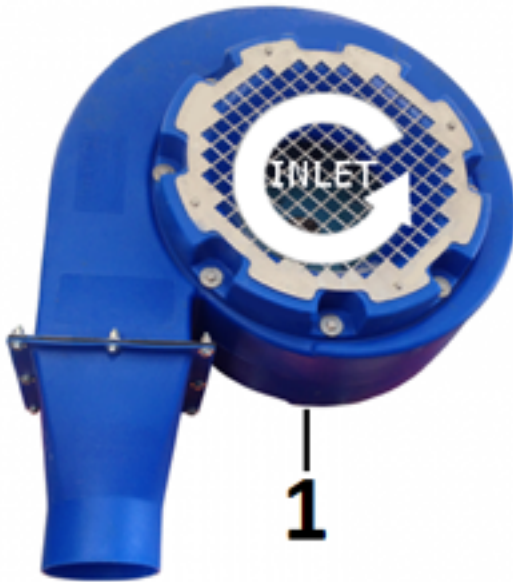
Isometric



AIR-10-D

Component Parts

Counter Clockwise Rotation



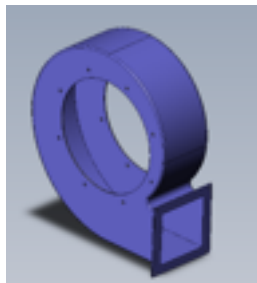
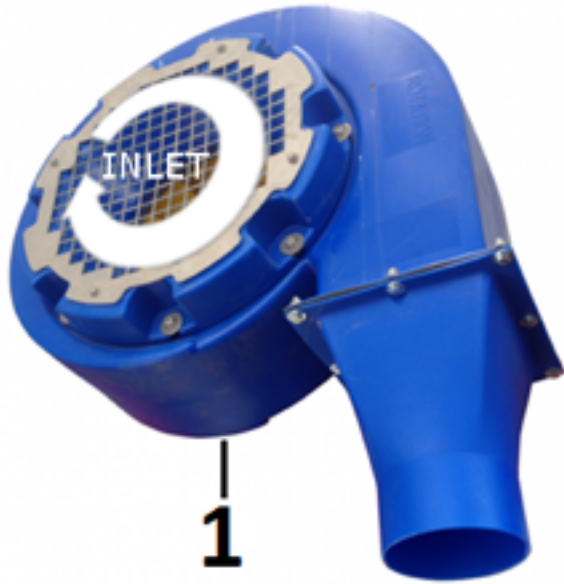
7

Item No	Part No.	Description	Related to:
1	AIR-10-D	10 HP DRIVER SIDE BLOWER PRODUCER	AIR-10-D
2	520-1204	10 HP BLOWER NOZZLE	AIR-10-D
3	520-1305	10 HP BLUE DRIVER SIDE IMPELLER	AIR-10-D
4	210-6209	10 HP BLOWER MOTOR	AIR-10-D
5	520-1310	10 HP BLOWER INLET SCREEN	AIR-10-D
6	520-1307-P	10 HP INLET CONE	AIR-10-D
7	520-1309	10 HP BLOWER HOUSING	AIR-10-D

AIR-10-P

Component Parts

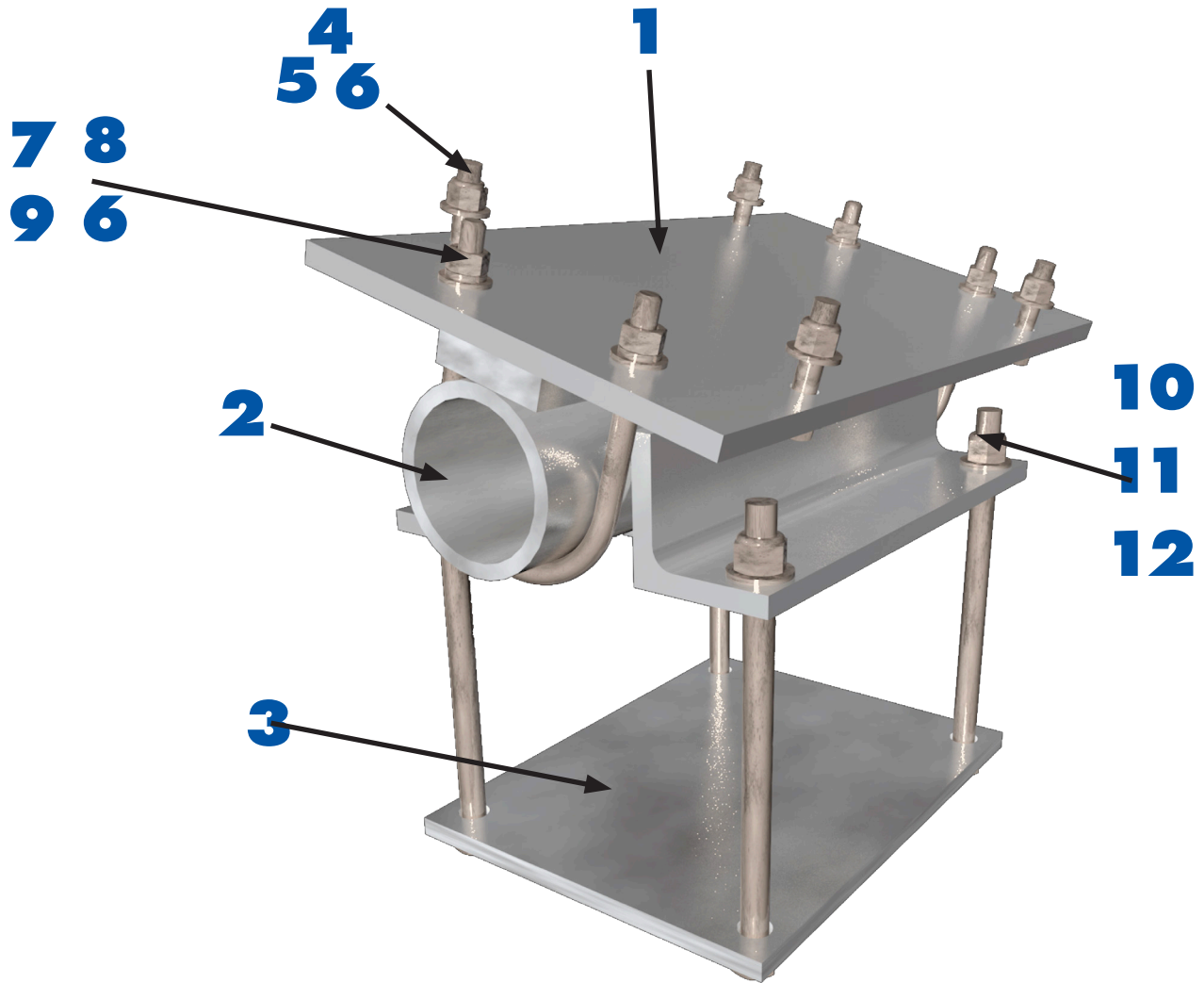
Clockwise Rotation



Item No	Part No.	Description	Related to:
1	AIR-10-P	10 HP PASSENGER SIDE BLOWER PRODUCER	AIR-10-P
2	520-1204	10 HP BLOWER NOZZLE	AIR-10-P
3	520-1304	10 HP YELLOW PASSENGER SIDE IMPELLER	AIR-10-P
4	210-6209	10 HP BLOWER MOTOR	AIR-10-P
5	520-1310	10 HP BLOWER INLET SCREEN	AIR-10-P
6	520-1307-P	10 HP INLET CONE	AIR-10-P
7	520-1309	10 HP BLOWER HOUSING	AIR-10-P

BLOWER BRACKETS

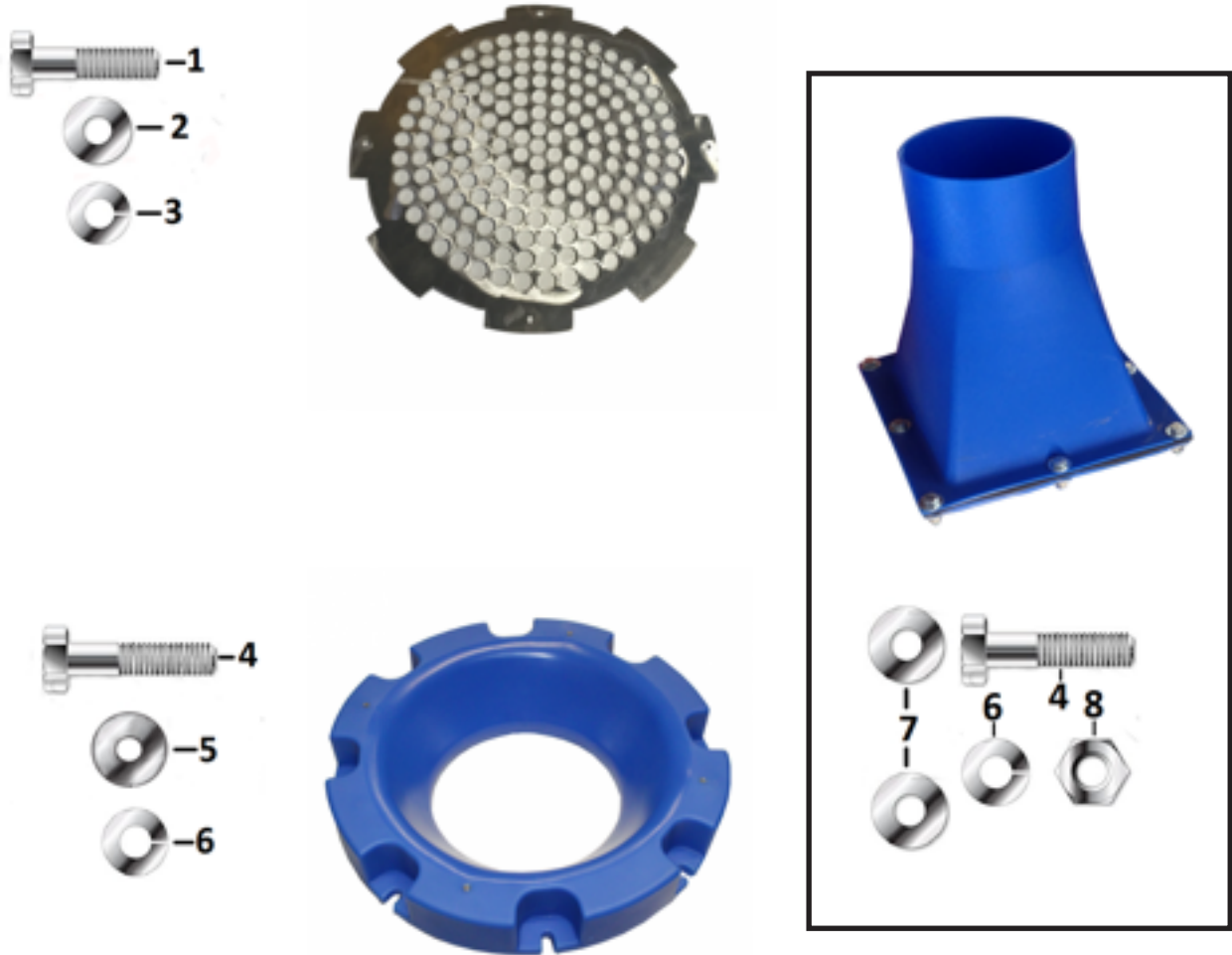
Assembly Part# 960-0014



Item No	Part No.	Description	Related to:
1	715-0037	10 HP BLOWER MOTOR BASE PLATE	BLOWER BRACKET
2	715-0035	10 HP BLOWER PIVOT BRACKET	BLOWER BRACKET
3	715-0036	10 HP BLOWER MOUNTING BACKING PLATE	BLOWER BRACKET
4	820-1430	3/8" X 2" BOLT STAINLESS STEEL	BLOWER BRACKET
5	840-1900	3/8" LOCK NUT STAINLESS STEEL	BLOWER BRACKET
6	870-1300	3/8" FLAT WASHER STAINLESS STEEL	BLOWER BRACKET
7	810-1610	3/8" X 3" X 4-13/16" SST ROUND U-BOLT	BLOWER BRACKET
8	840-1100	3/8" REGULAR HEX NUT STAINLESS STEEL	BLOWER BRACKET
9	870-1350	3/8" LOCK WASHER STAINLESS STEEL	BLOWER BRACKET
10	820-1655	1/2" X 8" BOLT STAINLESS STEEL	BLOWER BRACKET
11	840-2000	1/2" LOCK NUT STAINLESS STEEL	BLOWER BRACKET
12	870-1400	1/2" FLAT WASHER STAINLESS STEEL	BLOWER BRACKET

10HP BLOWER

Hardware



Item No	Part No.	Description	Related to:
1	820-1200	¼" X 1" STAINLESS STEEL BOLT	4
2	870-1102	¼" FLAT WASHER STAINLESS STEEL	4
3	870-1099	¼" LOCK WASHER STAINLESS STEEL	4
4	820-1415	3/8" X 1-1/4" STAINLESS STEEL BOLT	4 INLET / 8 NOZZLE
5	870-1311	3/8" X 1-1/2" SST FENDER WASHER	4
6	870-1350	3/8" LOCK WASHER STAINLESS STEEL	4 INLET / 8 NOZZLE
7	870-1300	3/8" FLAT WASHER STAINLESS STEEL	16
8	840-1100	3/8" REGULAR HEX NUT STAINLESS STEEL	8

800-782-1582 ext.: **2** for service

SYSTEMS Air 10-D/10-P
 Rev: 2

ORDER FORM

Fill and Fax

Company Name _____ Buyer: _____
Address _____ City _____
State _____ ZIP _____
Tel _____ Fax _____
PO# _____

QTY.	MODEL#	DESCRIPTION	AMOUNT

235 W. Florence Avenue. • Inglewood, California 90301 • (800) 782-1582 • Fax (310) 412-1196

Purchaser, by his/her signature acknowledges that he/she has read and agrees to all of the terms, conditions, and prices specified on this contract, including those printed on the back hereof which terms and conditions shall be incorporated in and made a part of this contract for all purposes. Purchaser understands and agrees that all of the terms, conditions and prices set forth in this Order Contract are subject to approval by an N/S Corporate Officer. Nothing in this Order Contract shall be binding until that N/S Corporate Officer executes this Order Contract by signing it below.

PART NUMBERS

Part numbers Included

210-6209.....	6
210-6209.....	7
520-1204.....	6
520-1204.....	7
520-1304.....	7
520-1305.....	6
520-1307-P.....	6
520-1307-P.....	7
520-1309.....	6
520-1309.....	7
520-1310.....	6
520-1310.....	7
715-0035.....	8
715-0036.....	8
715-0037.....	8
810-1610.....	8
820-1200.....	9
820-1415.....	9
820-1430.....	8
820-1655.....	8
840-1100.....	8
840-1100.....	9
840-1900.....	8
840-2000.....	8
870-1099.....	9
870-1102.....	9
870-1300.....	8
870-1300.....	9
870-1311.....	9
870-1350.....	8
870-1350.....	9
870-1400.....	8
AIR-10-D.....	6
AIR-10-P.....	7



N/S Corporation

VEHICLE WASHING EQUIPMENT • ESTABLISHED 1961

www.nswash.com

235 West Florence Avenue
Inglewood, California 90301

800-782-1582

Parts: Ext. **3**

Service: Ext. **2**

Fax: **310.412.1196**



Due to Continuous research N/S Corporation reserves the right to upgrade or change at any time, specifications, or designs without notice and without incurring any obligations.
Copyright © 2019 NS Corporation.

**COMPANY WITH
QUALITY SYSTEM
CERTIFIED BY DNV GL
= ISO 9001 =**