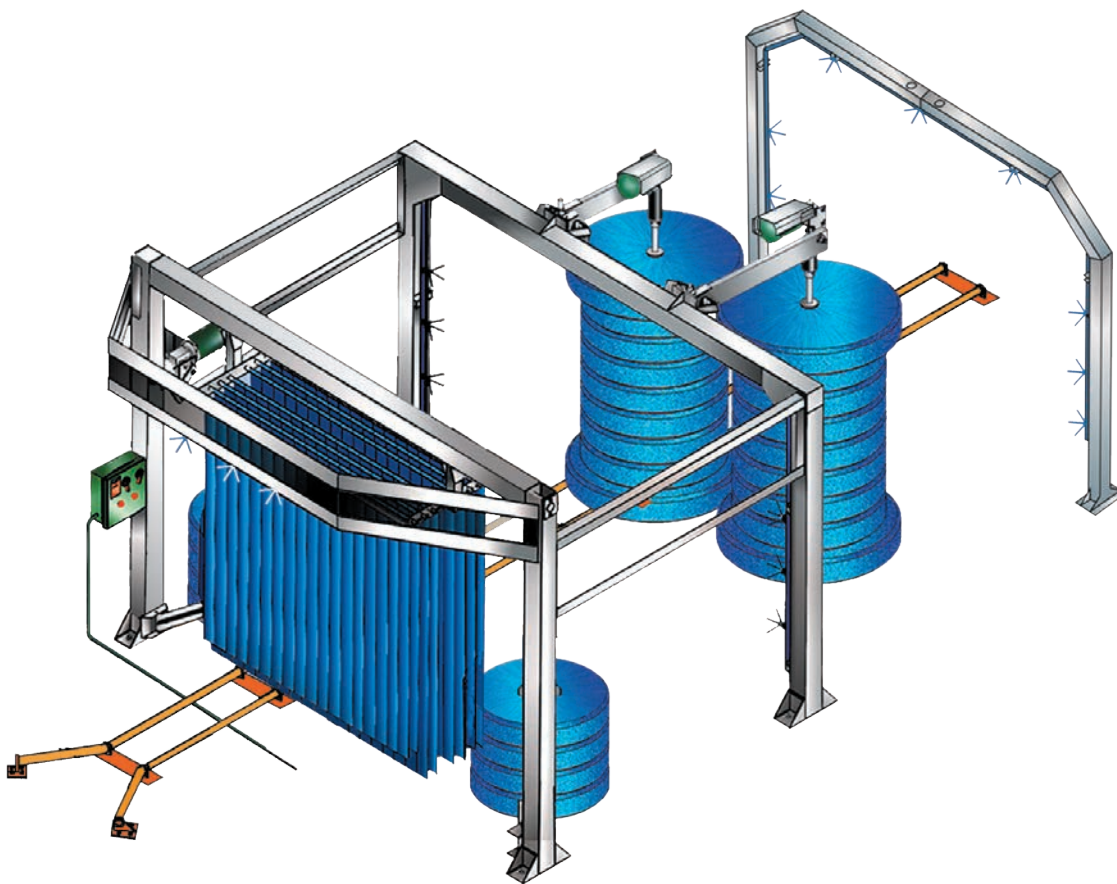


SYS 5 TOUCH F/R MITTER

PARTS MANUAL

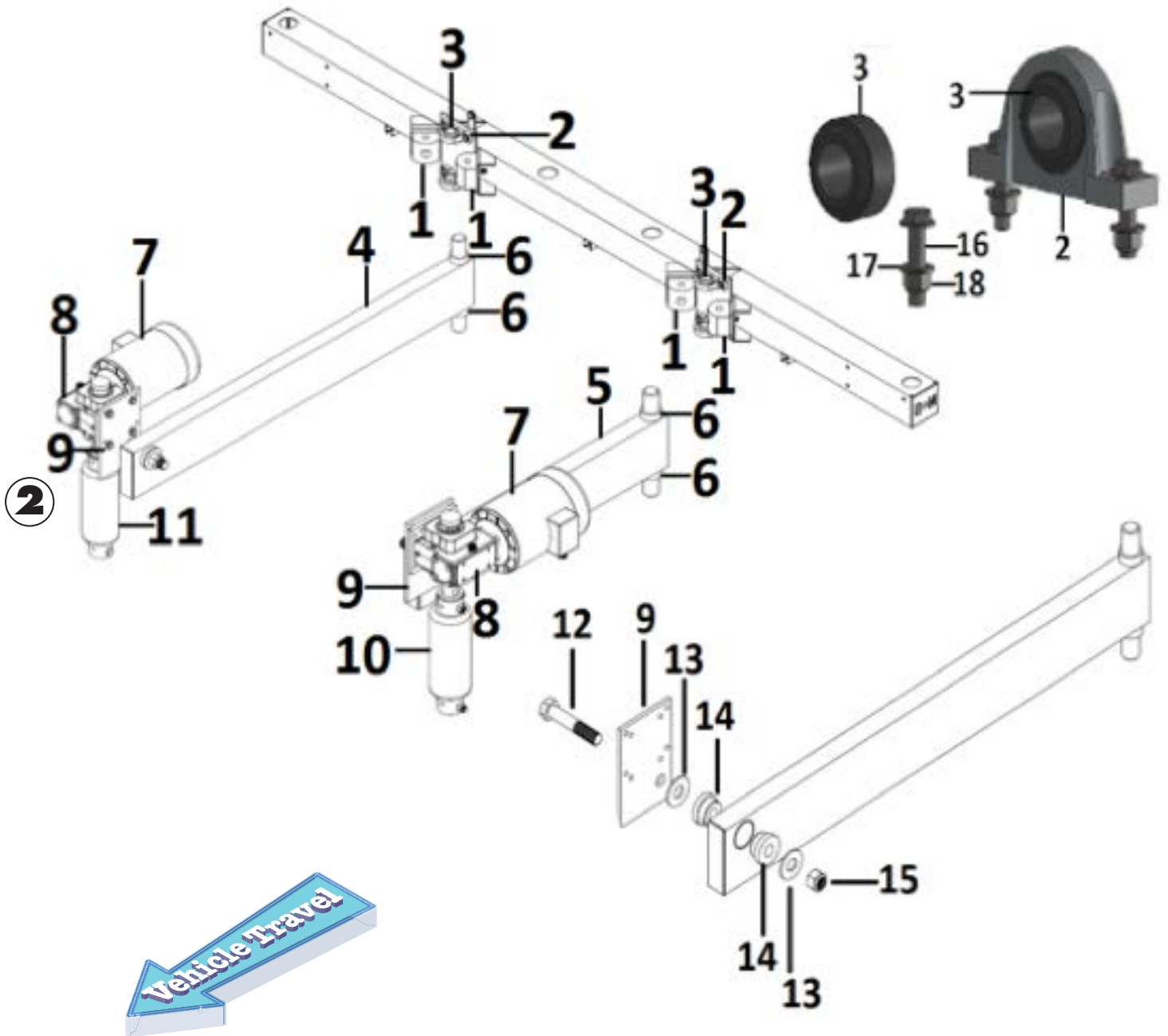


NS CORPORATION
Quality Equipment Since 1961

Revision: 1
Date: 06/07/19
Approved by: CA



5 Touch F/R Wrap Around Graphic



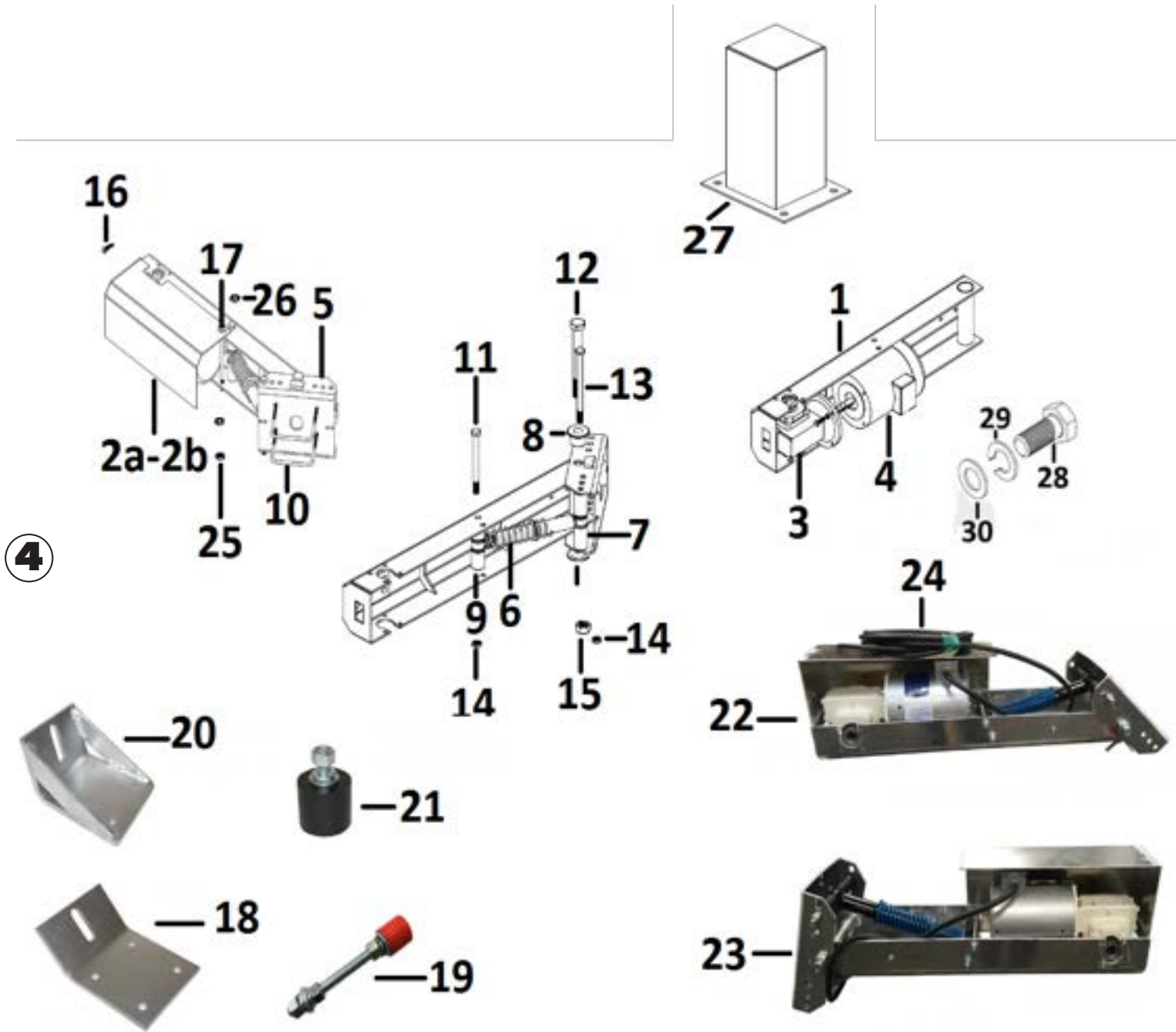
5 Touch F/R Wrap Around Parts List

Item No.	Part No.	Description	Related to:
1	640-1603	HARD ARM BUMPER	WRAP AROUND
2	610-1301	1½" BEARING HOUSING	WRAP AROUND
3	610-1340	1½" BEARING INSERT	WRAP AROUND
4	630-1043	PASSENGER SIDE WRAP ARM	WRAP AROUND
5	630-1044	DRIVER SIDE WRAP ARM	WRAP AROUND
6	900-0012	WRAP ARM SPACER	WRAP AROUND
7	212-1000	1 HP MOTOR	WRAP AROUND
8	235-2133	30:1 920 REDUCER WITH 1-7/16" SHAFT	WRAP AROUND
9	630-1029	920 MOUNTING PLATE	WRAP AROUND
10	766-2000	DRIVER SIDE BLUE COUPLING	WRAP AROUND
11	766-1000	PASSENGER SIDE BLUE COUPLING	WRAP AROUND
12	820-1561	1" X 5½" STAINLESS STEEL BOLT	WRAP AROUND
13	870-1700	1" X 5½" STAINLESS STEEL BOLT	WRAP AROUND
14	900-0006	RED WRAP ARM BUSHING	WRAP AROUND
15	840-5003	1" STAINLESS STEEL LOCK NUT	WRAP AROUND
16	820-1531	½" X 2-1/4" STAINLESS STEEL BOLT	WRAP AROUND
17	870-1400	½" STAINLESS STEEL FLAT WASHER	WRAP AROUND
18	840-2000	½" STAINLESS STEEL LOCK NUT	WRAP AROUND

3

Rocker Panel Brush Arms

New Style Layout



Rocker Panel Brush Arms

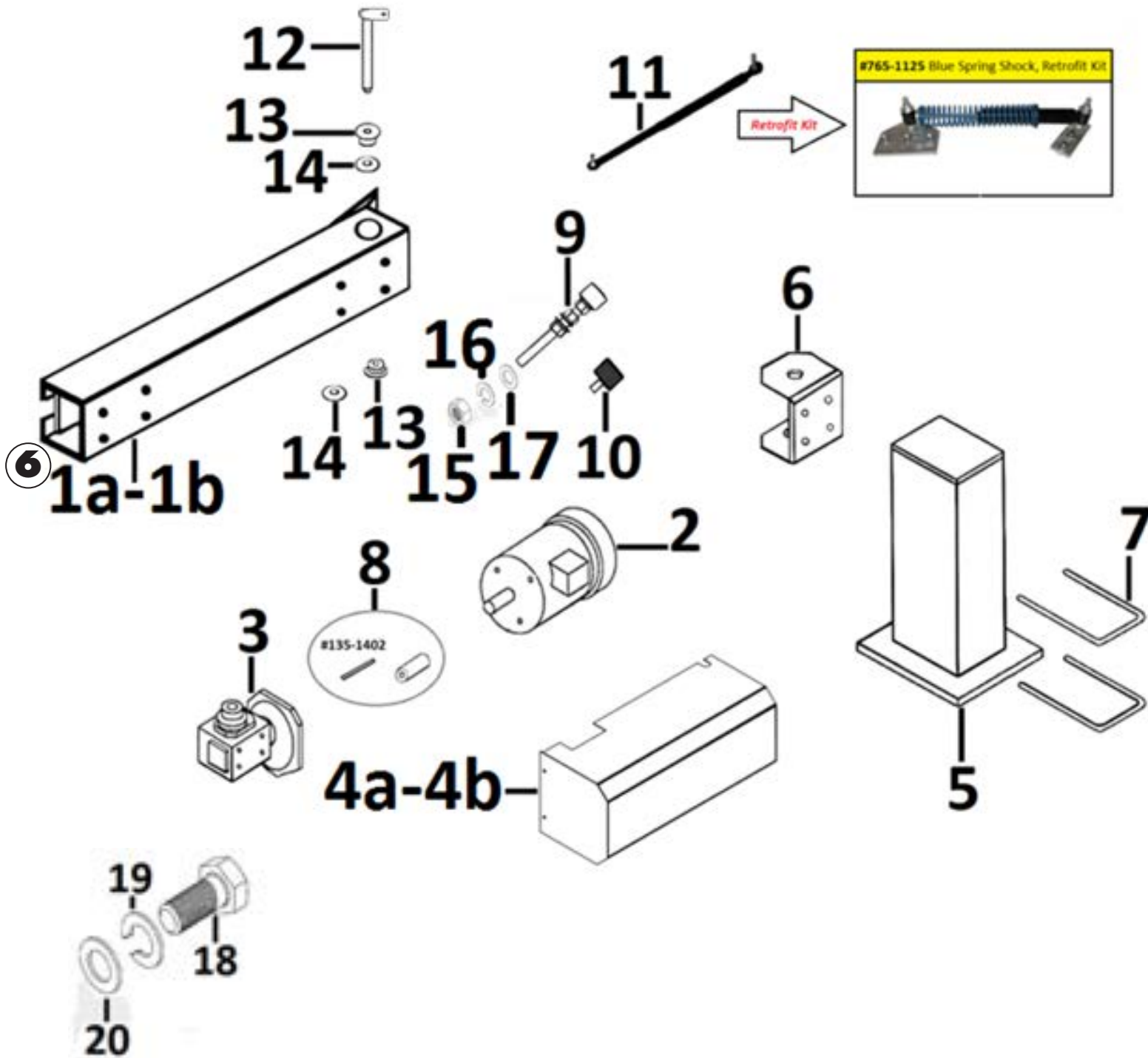
New Style Parts List

Item No.	Part No.	Description	Related to:
1	900-0405	UNIVERSAL ROCKER PANEL ARM	Rocker Panel Brush Arm
2a	900-1415	DRIVER SIDE RPB MOTOR COVER	Rocker Panel Brush Arm
2b	900-1414	PASSENGER SIDE RPB MOTOR COVER	Rocker Panel Brush Arm
3	235-2145	30:1 920 REDUCER WITH 1" SHAFT (LAMMS-CLOTH)	Rocker Panel Brush Arm
4	210-2096	1HP 3PH MOTOR 5/8" SHAFT 60HZ	Rocker Panel Brush Arm
5	900-0404	RPB ARM MOUNTING BRACKET	Rocker Panel Brush Arm
6	765-1114	SHOCK WITH BLUE SPRING	Rocker Panel Brush Arm
7	160-0410	1.5" X 3.25" RPB SHOCK SPACER	Rocker Panel Brush Arm
8	160-0405	RPB PIVOT BUSHING	Rocker Panel Brush Arm
9	160-0415	1.5" X 2.5" RPB SHOCK SPACER	Rocker Panel Brush Arm
10	810-1652	3/8" STAINLESS STEEL U-BOLT	Rocker Panel Brush Arm
11	810-1004	5/8" X 8½" STAINLESS STEEL BOLT	Rocker Panel Brush Arm
12	810-1002	1" X 10" STAINLESS STEEL BOLT	Rocker Panel Brush Arm
13	820-3057	5/8" X 10" STAINLESS STEEL BOLT	Rocker Panel Brush Arm
14	840-1016	5/8" STAINLESS STEEL THIN JAM NUT	Rocker Panel Brush Arm
15	840-1015	1" STAINLESS STEEL THIN JAM NUT	Rocker Panel Brush Arm
16	860-1114	1" STAINLESS STEEL TEK SCREW	Rocker Panel Brush Arm
17	820-1656	1/2" X 8½" STAINLESS STEEL BOLT	Rocker Panel Brush Arm
18	900-1412	DRIVER SIDE BUMPER PLATE	Rocker Panel Brush Arm
19	640-1410	RPB DRIVER SIDER BUMPER ASSEMBLY	Rocker Panel Brush Arm
20	900-1413	PASSENGER SIDE BUMPER PLATE	Rocker Panel Brush Arm
21	640-1400	1½" PASSENGER SIDE BUMPER	Rocker Panel Brush Arm
22	900-1615	Driver Rocker Panel Arm Assembly Includes 1Hp Motor and 30:1 Reducer For Lammscloth (Brush Not Included)	Rocker Panel Brush Arm
23	900-1625	Passenger Rocker Panel Arm Assembly Includes 1Hp Motor and 30:1 Reducer For Lammscloth (Brush Not Included)	Rocker Panel Brush Arm
24	330-0020	14/4 600V CORD	Rocker Panel Brush Arm
25	840-1325	1/2" STAINLESS STEEL THIN JAM NUT	Rocker Panel Brush Arm
26	870-1400	1/2" STAINLESS STEEL FLAT WASHER	Rocker Panel Brush Arm
27	900-0397	STAND ALONE ROCKER PANEL STAND	Stand Alone RPB
28	820-1420	3/8" X 1½" STAINLESS STEEL BOLT	Reducer To Arm
29	870-1350	3/8" STAINLESS STEEL LOCK WASHER	Reducer To Arm
30	870-1300	3/8" STAINLESS STEEL FLAT WASHER	Reducer To Arm

5

Rocker Panel Brush Arms

Old Style Layout



Rocker Panel Brush Arms

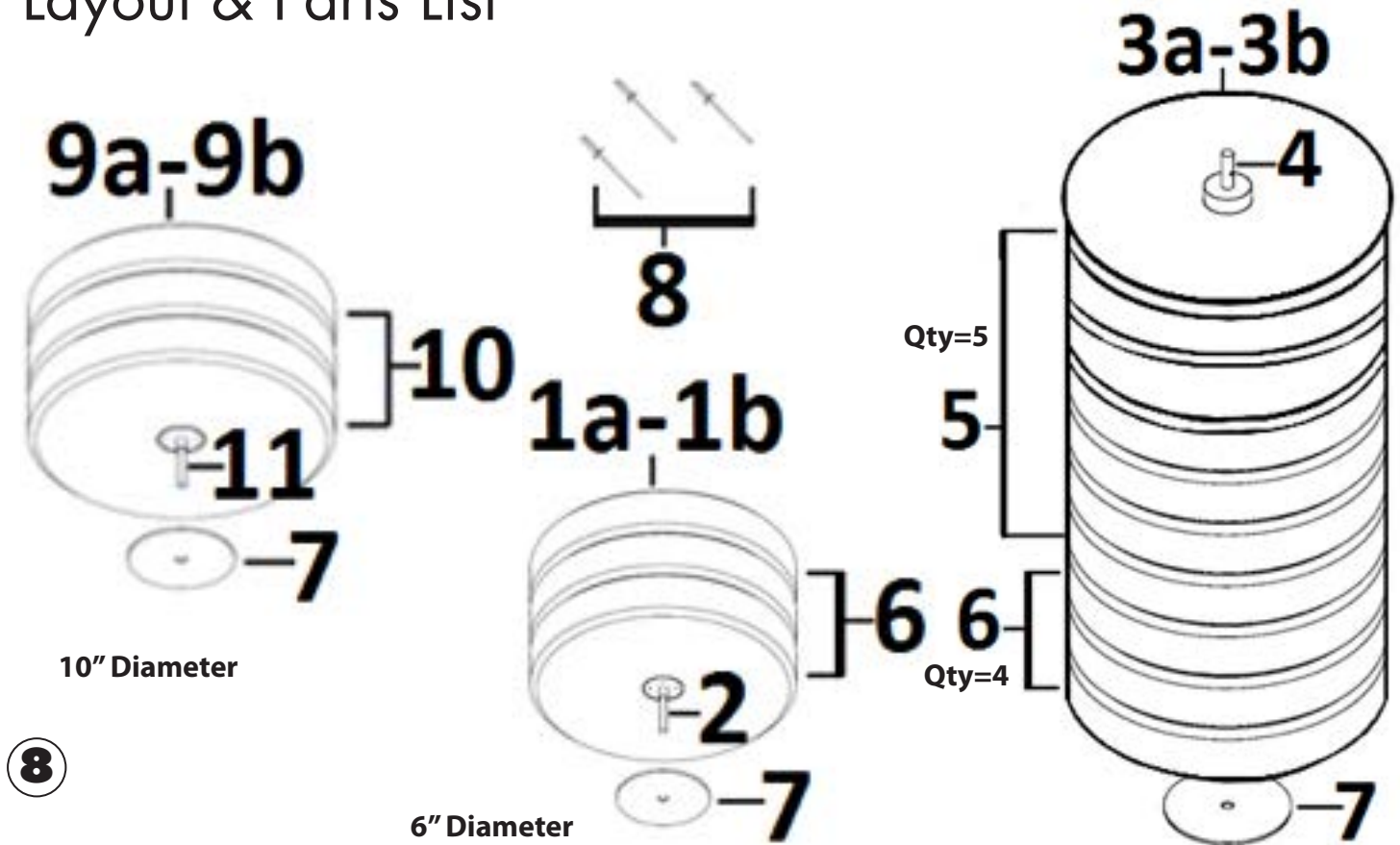
Old Style Parts List

Item No.	Part No.	Description	Related to:
1a	900-0410	Driver Side Rocker Panel Arm (Old Style Arm)	Rocker Panel Brush Arm
1b	900-0412	Passenger Side Rocker Panel Arm (Old Style Arm)	Rocker Panel Brush Arm
2	210-2096	1HP 3PH MOTOR 5/8" SHAFT 60 HZ	Rocker Panel Brush Arm
3	235-2145	30:1 REDUCER 920 WITH 1" SHAFT (Lammscloth)	Rocker Panel Brush Arm
4a	900-1415	Driver Side Rocker Panel Arm Cover	Rocker Panel Brush Arm
4b	900-1414	Passenger Side Rocker Panel Arm Cover	Rocker Panel Brush Arm
5	900-0397	ROCKER PANEL LEG ASSEMBLY (Single Stand)	Rocker Panel Brush Arm
6	140-1444	MOUNTING ARM BRACKET	Rocker Panel Brush Arm
7	810-1652	3/8" STAINLESS STEEL U-BOLT	Rocker Panel Brush Arm
8	900-0531	5/8" X 3/4" ADAPTER SLEEVE AND KEY	Rocker Panel Brush Arm
9	640-1410	RPB DRIVER SIDE BUMPER ASSEMBLY	Rocker Panel Brush Arm
10	640-1400	1½" PASSENGER SIDE BUMPER	Rocker Panel Brush Arm
11	765-1104	60 LBS GAS SHOCK	Rocker Panel Brush Arm
12	900-9242	ROCKER PANEL BRUSH PIN	Rocker Panel Brush Arm
13	160-0405	ROCKER PANEL ARM UHMW PIVOT BUSHING	Rocker Panel Brush Arm
14	160-1098-.25	2½" X 1¼" X 1" UHMW WASHER	Rocker Panel Brush Arm
15	840-1300	1/2" REGULAR STAINLESS STEEL HEX NUT	Rocker Panel Brush Arm
16	870-1450	1/2" STAINLESS STEEL LOCK WASHER	Rocker Panel Brush Arm
17	870-1400	1/2" STAINLESS STEEL FLAT WASHER	Rocker Panel Brush Arm
18	820-1420	3/8" X 1½" STAINLESS STEEL BOLT	REDUCER TO ARM
19	870-1350	3/8" STAINLESS STEEL LOCK WASHER	REDUCER TO ARM
20	870-1300	3/8" STAINLESS STEEL FLAT WASHER	REDUCER TO ARM

7

Lammscloth Brushes

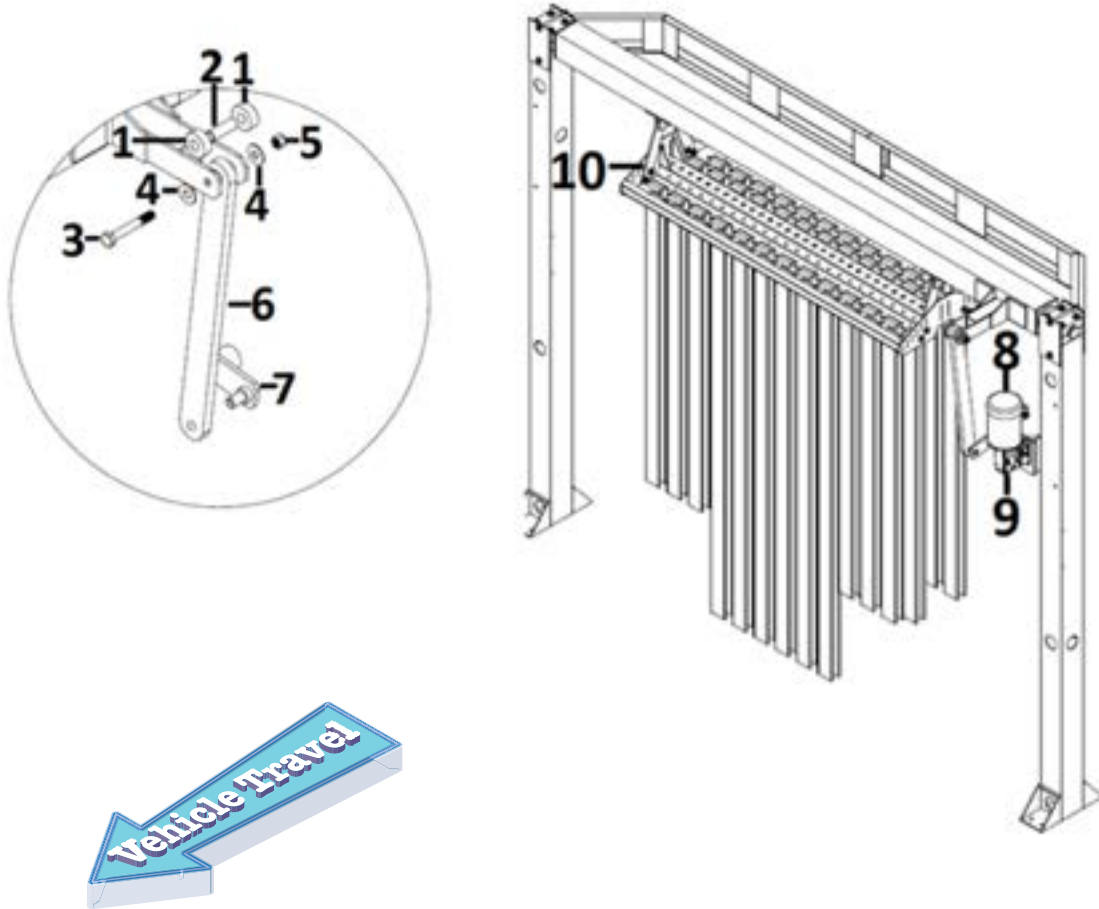
Layout & Parts List



8

Item No.	Part No.	Description	Related to:
1a	630-1321D	6" Driver Side Rocker Panel Brush Lammscloth	6" Rocker Panel Brush
1b	630-1321P	6" Passenger Side Rocker Panel Brush Lammscloth	6" Rocker Panel Brush
2	900-0189	Rocker Panel Brush Shaft (6" Barrel)	6" Rocker Panel Brush
3a	630-1301D	Driver Side Wrap Brush Lammscloth	Wrap Brush
3b	630-1301P	Passenger Side Wrap Brush Lammscloth	Wrap Brush
4	900-0210	Wrap Brush Shaft (6" X 80")	Wrap Brush
5	LCB-1/5-6	40" Half Density Lammscloth Brush Pelt	Wrap Brush
6	LCB-FULL-6	40" Full Density Lammscloth Brush Pelt	Rocker & Wrap Brush
7	710-1006	14" Blue Rubber Disc With Metal Disc Plate	Rocker & Wrap Brush
8	825-1260	3/16" X 0.96" Brush Rivet (4 Per Pelt)	Rocker & Wrap Brush
9a	630-1322D	10" Driver Side Rocker Panel Brush Lammscloth	10" Rocker Panel Brush
9b	630-1322P	10" Passenger Side Rocker Panel Brush Lammscloth	10" Rocker Panel Brush
10	LCB-FULL-10	Lammscloth Pelt Full Density For 10" Dia Shaft	10" Rocker Panel Brush
11	900-0188	Rocker Panel Brush Shaft(10"Barrel)	10" Rocker Panel Brush

Front to Rear Curtain Loop Style

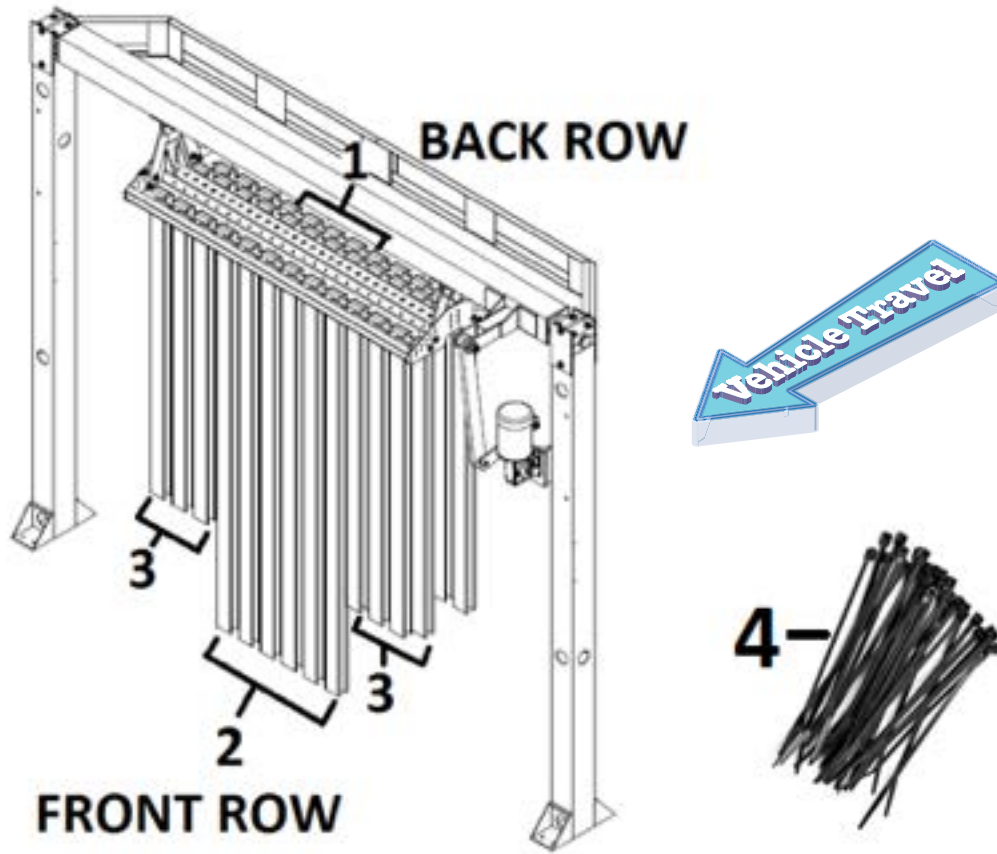


9

Item No.	Part No.	Description	Related To:
1	900-0109	2½" O.D X 1-5/16" X 1" I.D FRONT TO REAR SPACER	Front To Rear Curtain
2	900-0119	3" FRONT TO REAR SLEEVE	Front To Rear Curtain
3	820-1872	¾" X 5½" STAINLESS STEEL BOLT	Front To Rear Curtain
4	870-1602	¾" STAINLESS STEEL FLAT WASHER	Front To Rear Curtain
5	840-2200	¾" STAINLESS STEEL LOCK NUT	Front To Rear Curtain
6	900-0522	33" FRONT TO REAR CONNECTING ROD	Front To Rear Curtain
7	900-0550	1-7/16" MITTER CRANK	Front To Rear Curtain
8	212-1000	1 HP 3PH MOTOR ¾" SHAFT 60 HZ	Front To Rear Curtain
9	235-2134	40:1 920 REDUCER WITH 1-7/16" SHAFT	Front To Rear Curtain
10	900-0590	FRONT TO REAR CURTAIN RACK (LOOP STYLE)	Front To Rear Curtain

Curtain Strip

Loop Style

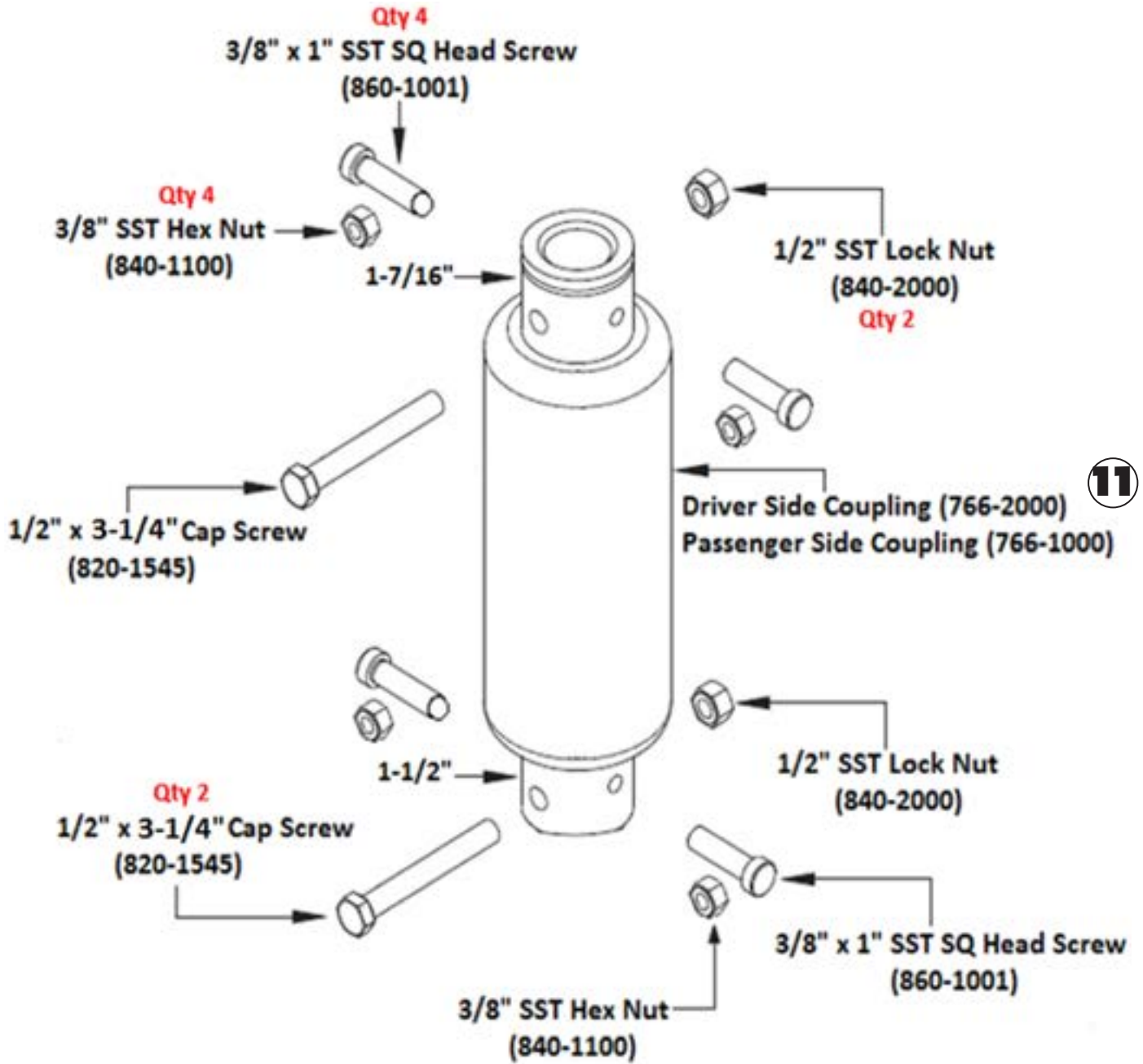


10

Item No.	Part No.	Description	Quantity
1	LCC-8X172	8" X 172" LAMMSCLOTH CURTAIN STRIP (LOOP STYLE)	11
2	LCC-8X152	8" X 152" LAMMSCLOTH CURTAIN STRIP (LOOP STYLE)	11
3	LCC-8X126	8" X 126" LAMMSCLOTH CURTAIN STRIP (LOOP STYLE)	28
4	200-1245	BLACK ZIP TIE (50 TYE WRAPS PER RACK)	50

Couplings

Accessories



Couplings

Accessories



766-2000
Driver Side Coupling



766-1000
Passenger Side Coupling

12



820-1545
1/2" x 3/4"
2 Bolts per Coupling



840-2000
1/2" SS Lock Nut
2 Lock Nuts per Coupling



860-1001
3/8" x 1" SS SQ Head Screw
4 Screws per Coupling



840-1100
3/8" SS Hex Nut
4 Hex Nuts per Coupling

Curtain Styles

Loop or Rod



13

Curtain Materials

Ozite, Felt or Lammscloth



Part Numbers

140-1444	7	840-1100	11
160-0405	5	840-1100	12
160-0405	7	840-1300	7
160-0410	5	840-1325	5
160-0415	5	840-2000	3
160-1098-.25	7	840-2000	11
200-1245	10	840-2000	11
210-2096	5	840-2000	12
210-2096	7	840-2200	9
212-1000	3	840-5003	3
212-1000	9	860-1001	11
235-2133	3	860-1001	11
235-2134	9	860-1001	12
235-2145	5	860-1114	5
235-2145	7	870-1300	5
330-0020	5	870-1300	7
610-1301	3	870-1350	5
610-1340	3	870-1350	7
630-1029	3	870-1400	3
630-1043	3	870-1400	5
630-1044	3	870-1400	7
630-1301D	8	870-1450	7
630-1301P	8	870-1602	9
630-1321D	8	870-1700	3
630-1321P	8	900-0006	3
630-1322D	8	900-0012	3
630-1322P	8	900-0109	9
640-1400	5	900-0119	9
640-1400	7	900-0188	8
640-1410	5	900-0189	8
640-1410	7	900-0210	8
640-1603	3	900-0397	5
710-1006	8	900-0397	7
765-1104	7	900-0404	5
765-1114	5	900-0405	5
766-1000	3	900-0410	7
766-1000	11	900-0412	7
766-1000	12	900-0522	9
766-2000	3	900-0531	7
766-2000	11	900-0550	9
766-2000	12	900-0590	9
810-1002	5	900-1412	5
810-1004	5	900-1413	5
810-1652	5	900-1414	5
810-1652	7	900-1414	7
820-1420	5	900-1415	5
820-1420	7	900-1415	7
820-1531	3	900-1615	5
820-1545	11	900-1625	5
820-1545	12	900-9242	7
820-1561	3	LCB-1/5-6	8
820-1656	5	LCB-FULL-6	8
820-1872	9	LCB-FULL-10	8
820-3057	5	LCC-8X126	10
825-1260	8	LCC-8X152	10
840-1015	5	LCC-8X172	10
840-1016	5		
840-1100	11		



N/S Corporation

VEHICLE WASHING EQUIPMENT • ESTABLISHED 1961

www.nswash.com

235 West Florence Avenue
Inglewood, California 90301

800-782-1582

Parts: Ext. **3**

Service: Ext. **2**

Fax: **310.412.1196**



Due to Continuous research N/S Corporation reserves the right to upgrade or change at any time, specifications, or designs without notice and without incurring any obligations.

Copyright © 2019 NS Corporation.

**COMPANY WITH
QUALITY SYSTEM
CERTIFIED BY DNV GL
= ISO 9001 =**