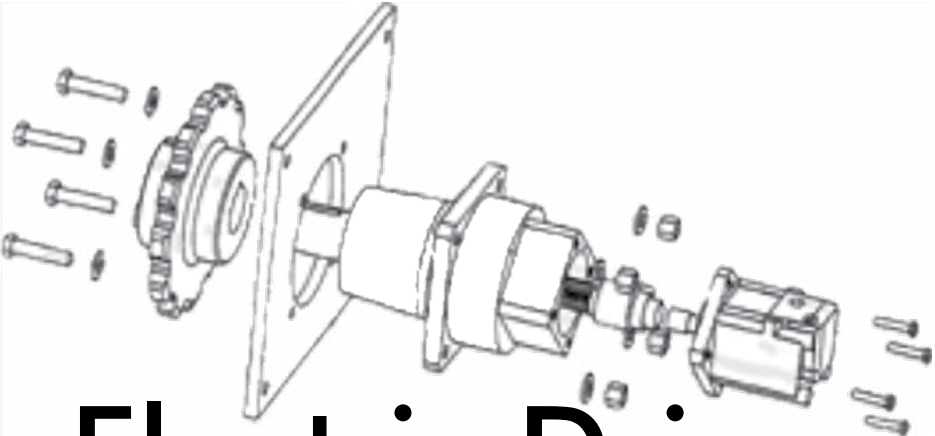
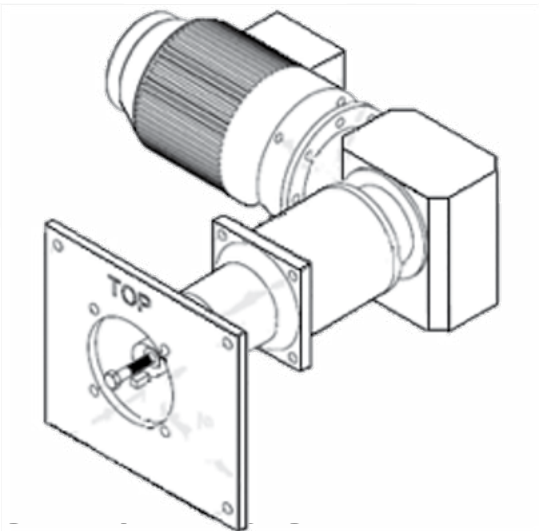


OULD-200 (C-188)

Hydraulic Drive



Electric Drive



Parts Manual

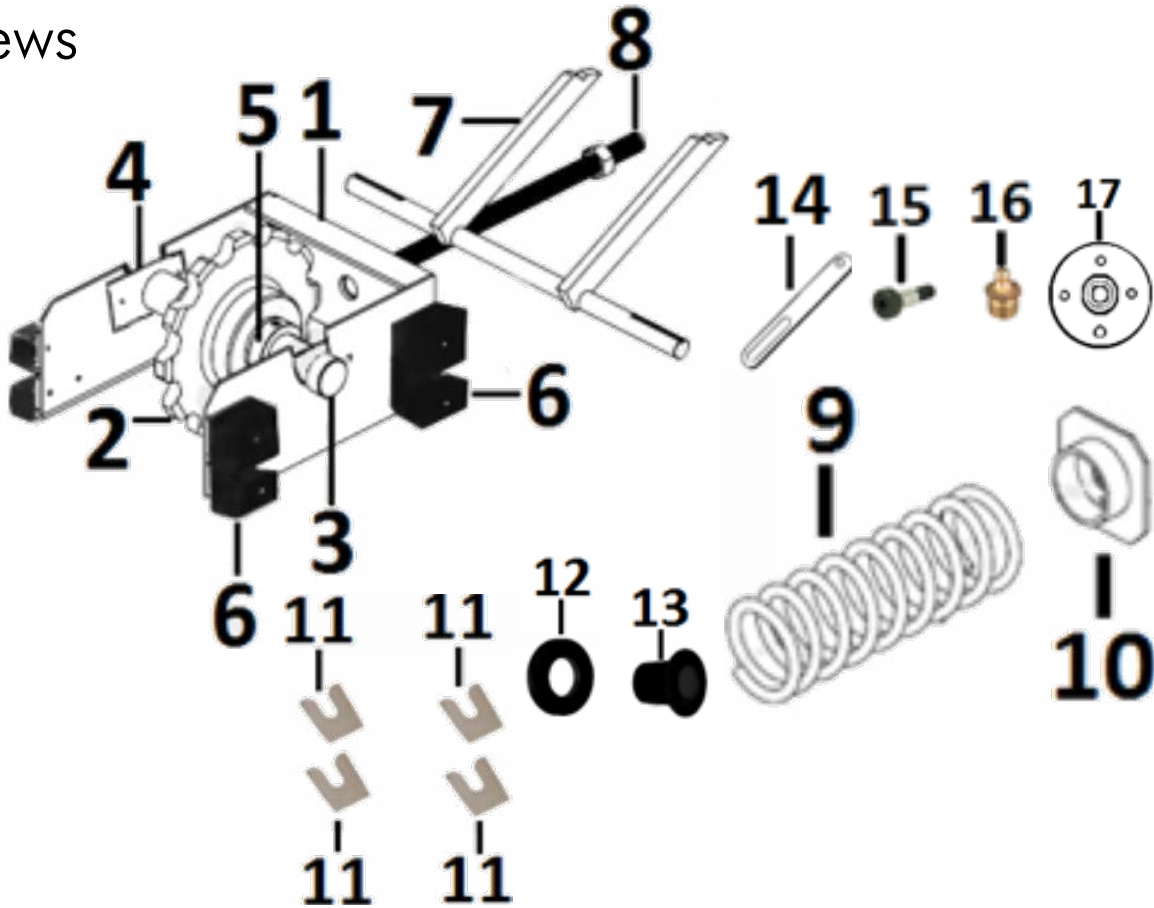
NS CORPORATION
Quality Equipment Since 1961



Revision: **2**
Revision Date:
5/2019
Approved by:
CA

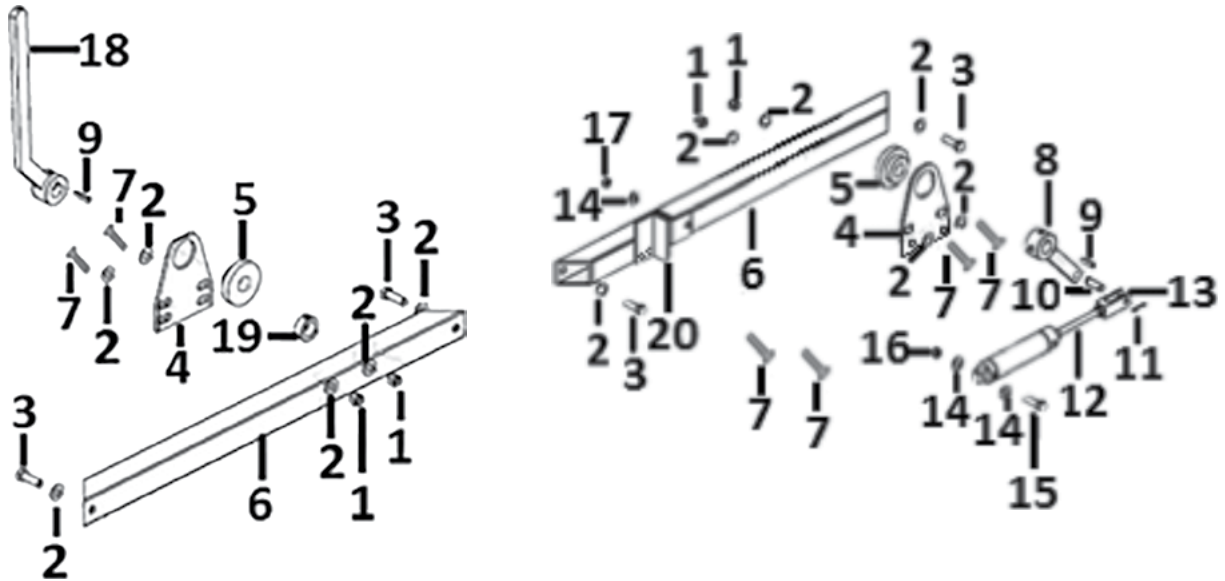
Take-Up Box

Views



Item No.	Part No.	Description	Related to:
1	900-0157	Take-Up Conveyor Slider Box	Take-Up Box
2	770-1101	4" 12 Teeth Sprocket-With No Key	Take-Up Box
3	900-0145	Take Up Shaft Sprocket Assembly	Take-Up Box
4	900-0145-1	Take Up Sprocket Shaft Plate	Take-Up Box
5	680-2545	2", 2 Piece Lock Collar	Take-Up Box
6	900-2773	6" X 2" X 2" Uhmw C Block	Take-Up Box
7	900-0162	Fork, Roller Raiser Oud-200	Take-Up Box
8	800-1005	Rod, 1" X 18" All Threaded Zinc	Take-Up Box
9	765-1107	Conveyor Spring	Take-Up Box
10	901-9016	Conveyor Spring Retainer	Take-Up Box
11	910-1042	1/4" Alum Shim	Take-Up Box
12	165-1210-.25	3" X 1/4" X 2" Uhmw Washer	Take-Up Box
13	175-2000-4.25	3" X 3/4" X 2" Uhmw Sleeve	Take-Up Box
14	901-9024	Link Bar	Take-Up Box
15	BLO-206	1/2" X 1/2" Shoulder Bolt	Take-Up Box
16	400-0000	1/8" Straight Grease Fitting	Take-Up Box
17	-----	1" Threaded Rod Retainer	Take-Up Box

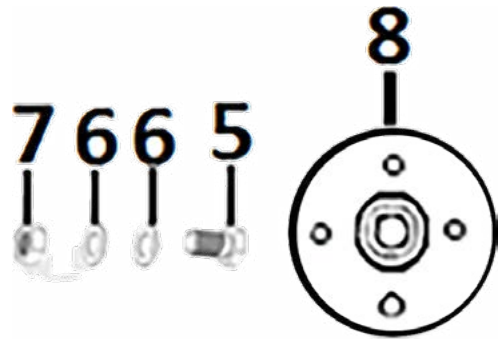
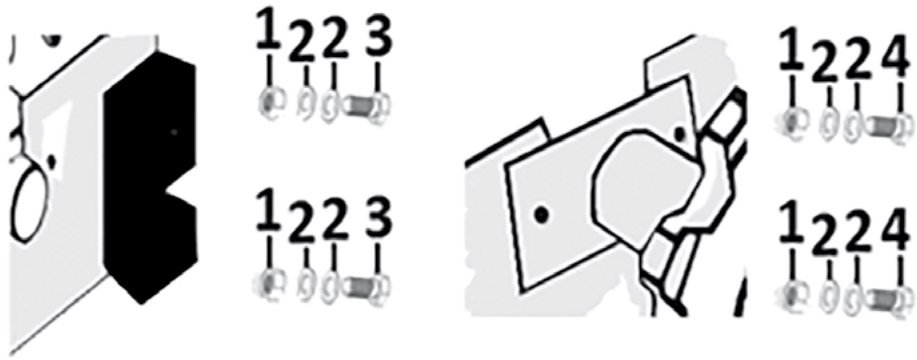
Take-Up Box Hardware



Item No.	Part No.	Description	Related to:
1	840-2000	1/2" Locknut	Take-Up Box
2	870-1400	1/2" Flat Washer	Take-Up Box
3	820-1218	1/2" X 1 1/4" Bolt	Take-Up Box
4	120-4045-5	Conveyor Triangle	Take-Up Rail
5	175-2000-1	2.5" Dia X 1" Bushing	Conveyor Triangle
6	900-0183	SS Conveyor Take-Up Rail	Take-Up Box
7	820-0015	3/8" X 3" Bolt	Conveyor Triangle
8	900-0185	Roller Call-Up	Roller Raiser Fork
9	830-1330S	3/16" X 1" Cotter Pin	Clevis Roller Call-Up
10	135-1501	Clevis Cotter	Clevis Roller Call-Up
11	830-1330S	Cotter Pin 3/16" X 1" Long	Clevis Roller Call-Up
12	440-1195	1 1/2" X 4" Mini Air Cylinder Parker	Air Cylinder Bracket
13	900-9800	Clevis Roller Call-Up	Mini Air Cylinder
14	870-1300	3/8" Flat Washer	Mini Air Cylinder
15	820-1430	3/8" X 2" Bolt	Mini Air Cylinder
16	840-1100	3/8" Regular Nut	Mini Air Cylinder
17	840-1900	3/8" Locknut	Mini Air Cylinder
18	901-9011	Conveyor Lever Callup 15" Lg.	Roller Raiser Fork
19	680-1170	Collar 1" Solid Shaft 1 Set Screw	Roller Raiser Fork
20	-----	Mini Air Cylinder Bracket Oud	Mini Air Cylinder

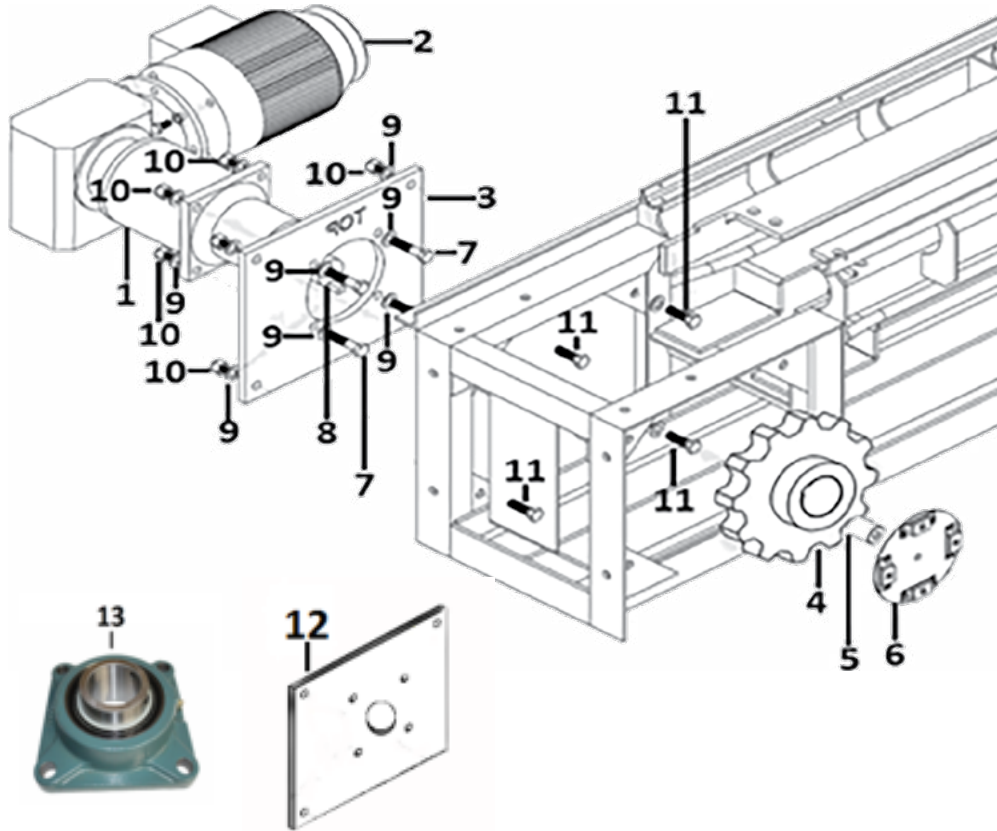
Take-Up Box

Hardware



Item No.	Part No.	Description	Related to:
1	840-2000	1/2" LOCKNUT	Take-Up Box
2	870-1400	1/2" FLAT WASHER	Take-Up Box
3	820-1541	1/2" X 3" BOLT	Take-Up Box
4	820-1218	1/2" X 1/4" BOLT	Take-Up Box
5	820-1420	3/8" X 1 1/2" BOLT	Take-Up Box
6	870-1300	3/8" FLAT WASHER	Take-Up Box
7	840-1900	3/8" LOCK NUT	Take-Up Box
8	-----	1" THREADED ROD RETAINER	Take-Up Box

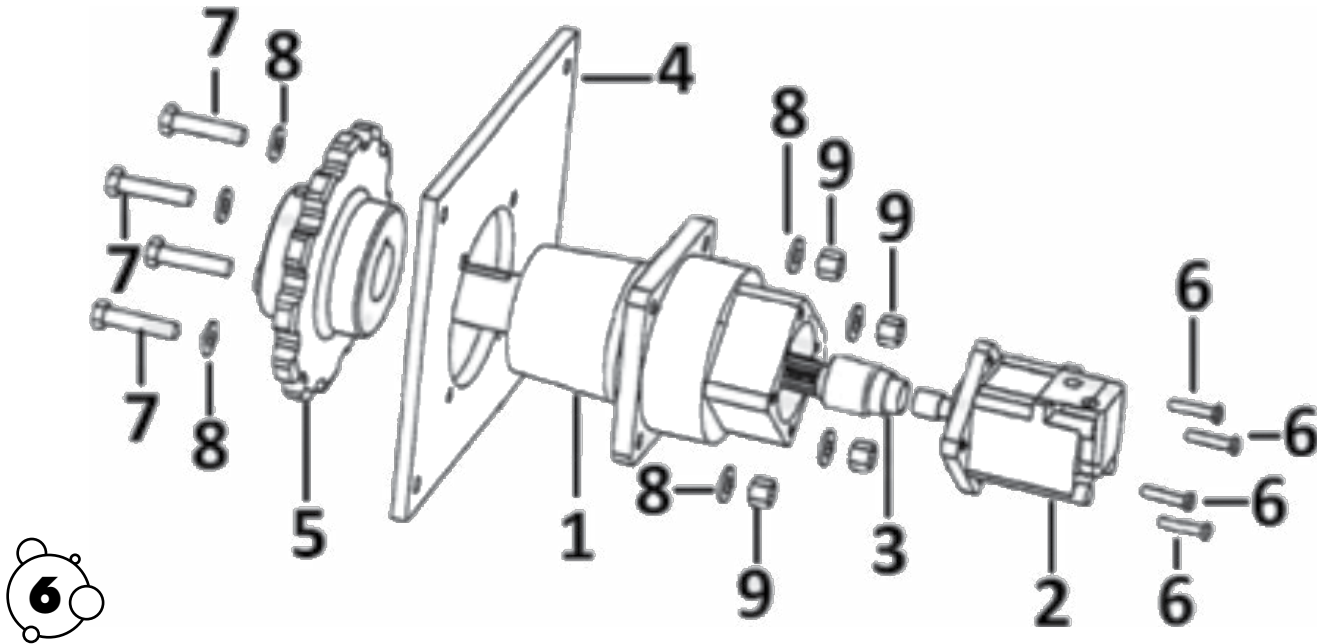
Electric Drive Illustration



Item No.	Part No.	Description	Related to:
1	230-1322	HECO ELECTRIC DRIVE REDUCER	Electric Drive
2	210-5209	MOTOR 5HP 3PH 1750RPM	Electric Drive
3	140-5100	MOTOR MOUNT BACK PLATE	Electric Drive
4	770-1100	4" 12 TOOTH SPROCKET-WITH KEY	Electric Drive
5	200-1613	1½" X 2" MAGNET DISC SPACER	Electric Drive
6	900-2004	MAGNETIC PULSE DISC W/ MAGNETS	Electric Drive
7	820-3049	5/8" X 2¾" BOLT	Electric Drive
8	135-1500	½" X 3¼" SQUARE KEYSTOCK	Electric Drive
9	870-1302	5/8" FLAT WASHER	Electric Drive
10	840-2100	5/8" LOCKNUT	Electric Drive
11	820-1749	5/8" X 2" BOLT	Electric Drive
12	901-9025	BEARING/SHAFT MOUNTING PLATE	Electric Drive
13	630-1134	2¼" 4 BOLT BEARING	Electric Drive

Hydraulic Drive

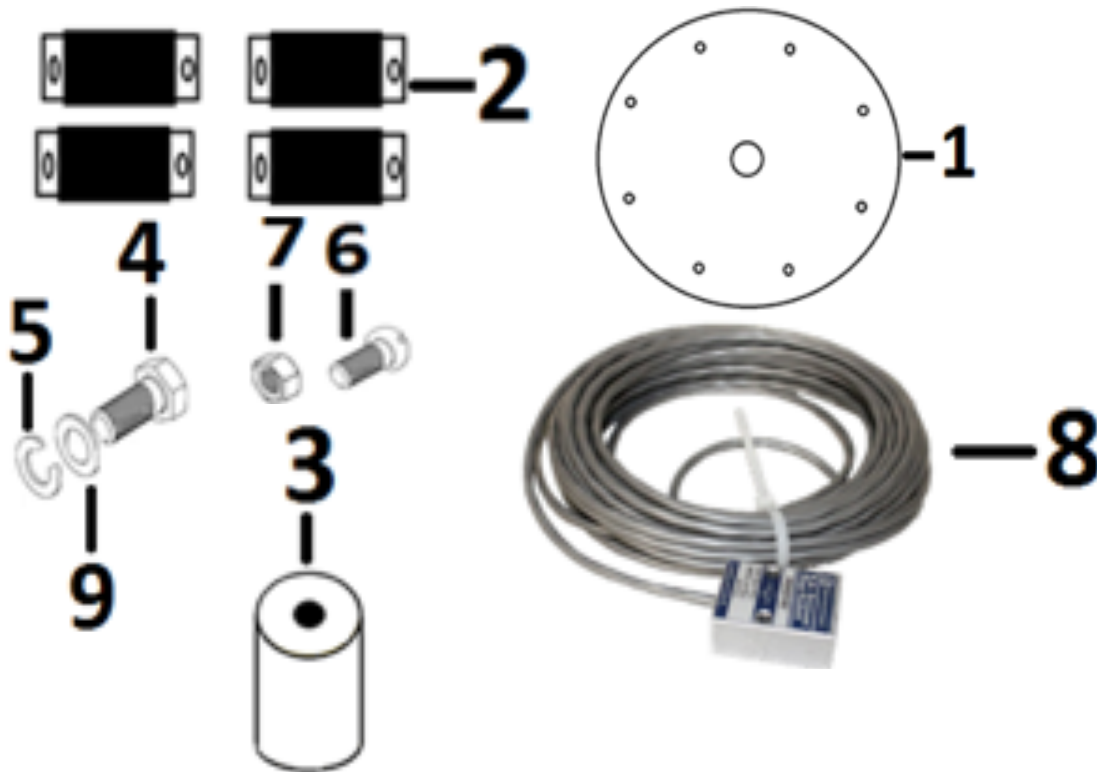
Illustration & Part



Item No.	Part No.	Description	Related to:
1	230-1321	HECO GEAR CENTER FLANGE	Hydraulic Drive
2	210-0009	MOTOR CHARLYNN HYDRAULIC	Hydraulic Drive
3	230-1303	REDUCER GEAR SET SUN GEAR KIT	Hydraulic Drive
4	140-5100	MOTOR MOUNT BACK PLATE	Hydraulic Drive
5	770-1100	4" 12 TOOTH 2 1/4" BORE SPROCKET	Hydraulic Drive
6	820-1520	1/2" X 1 1/2" BOLT	Hydraulic Drive
7	820-3049	5/8" X 2 3/4" BOLT	Hydraulic Drive
8	870-1500	5/8" FLAT WASHER	Hydraulic Drive
9	840-2100	5/8" LOCKNUT	Hydraulic Drive

Magnetic Pulse Switch

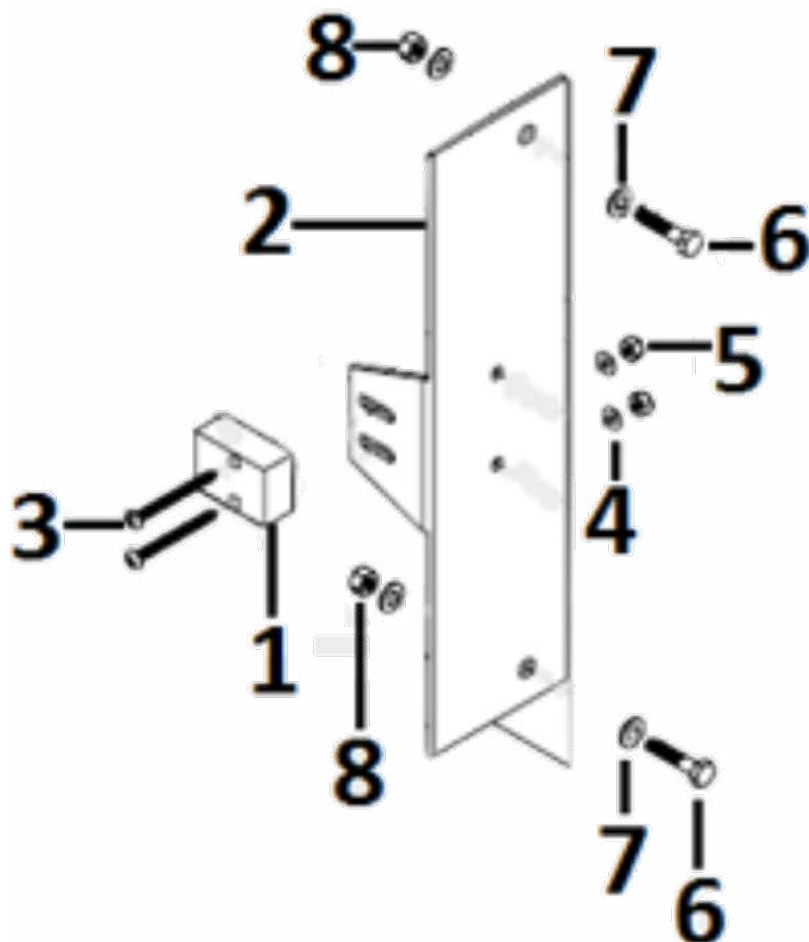
Illustration & Part



Item No.	Part No.	Description	Related to:
1	200-1612	Magnet Disc Plate	Magnetic Pulse Switch
2	200-6010	Disc Counting Magnet (Each)	Magnetic Pulse Switch
3	200-1613	1½" X 2" Magnet Disc Spacer	Magnetic Pulse Switch
4	820-1537	1/2" X 3½" Fine Thread Bolt	Magnetic Pulse Switch
5	870-1450	½" Lock Washer	Magnetic Pulse Switch
6	860-1069	10-24" X ¾" Bolt	Magnetic Pulse Switch
7	840-1901	10-24" Lock Nut	Magnetic Pulse Switch
8	200-6011	Proximity Switch	Magnetic Pulse Switch
9	870-1401	½" SS Flat Washer	Magnetic Pulse Switch

Proximity Assembly

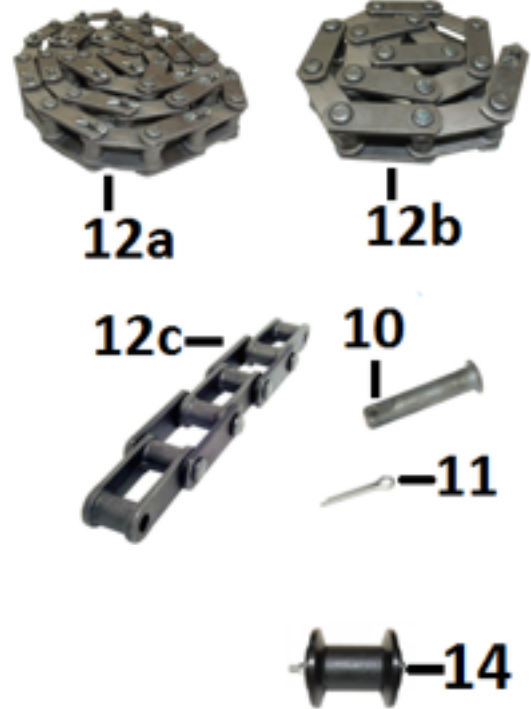
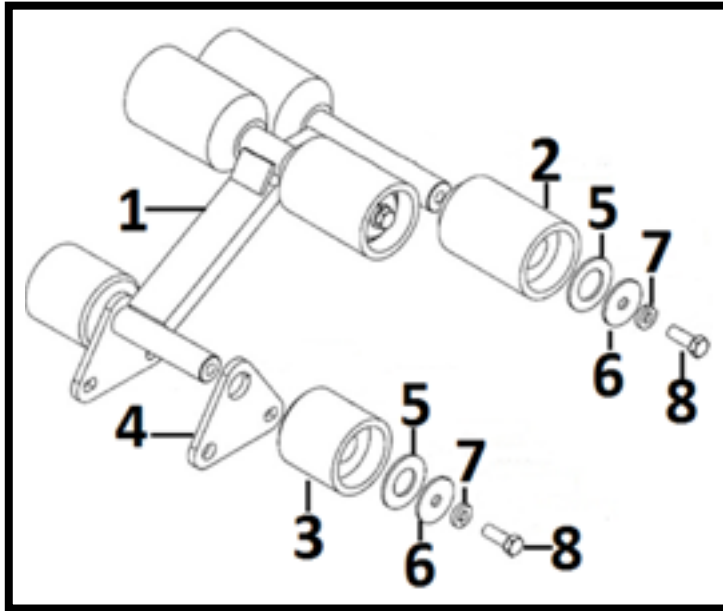
Illustration & Part #



Item No.	Part No.	Description	Related to:
1	200-6011	Proximity Switch	Proximity Switch Bracket
2	900-0144	Pulse Switch Mounting Bracket	Proximity Switch Bracket
3	860-1068	10-24" X 1½" SS Screw	Proximity Switch Bracket
4	870-1595	10-24" SS Flat Washer	Proximity Switch Bracket
5	840-1901	10-24" SS Lock Nut	Proximity Switch Bracket
6	820-1200	¼" X 1" SS Screw	Proximity Switch Bracket
7	870-1102	¼" SS Flat Washer	Proximity Switch Bracket
8	840-1850	¼" SS Lock Nut	Proximity Switch Bracket

6 Wheel Dolly

Illustration & Part



9 **900-2211**
 Complete Dolly, OUD-200 Bolt-on Style

Item No.	Part No.	Description	Related to:
1	900-2214	Dolly Oud-200 Frame	6-Wheel Dolly
2	910-1021	4" Long X 2½" O.d. Roller	6-Wheel Dolly
3	910-1019	2¾" Long X 2½" O.d. Roller	6-Wheel Dolly
4	670-3000	Plate Triangle	6-Wheel Dolly
5	870-1505	1" SS Flat Washer	6-Wheel Dolly
6	870-1311	3/8" X 1½" SS Fender Washer	6-Wheel Dolly
7	870-1350	3/8" SS Lock Washer	6-Wheel Dolly
8	820-1410	3/8" X 1" SS Screw	6-Wheel Dolly
9	900-2211	Oud-200 Bolt-On Style Dolly	6-Wheel Dolly
10	830-1311	C-188 Chain Pin	C-188 Chain
11	830-1330S	3/16" X 1" Cotter Pin	C-188 Chain
12A	670-1605	10' Cotter & Pin C-188 Chain	C-188 Chain
12B	670-1607	3' 6" Riveted C-188 Chain	C-188 Chain
13C	670-1606	7' 4" Riveted C-188 Chain	C-188 Chain
14	160-1100	Roller Chain Guide For C-188 Chain	C-188 Chain And Dolly



Trap Doors

Illustration & Part

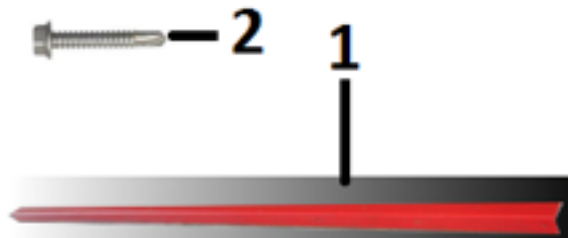


Item No.	Part No.	Description	Related to:
1	900-0149-1	EXIT TRAP DOOR	TRAP DOORS
2	900-0148	ENTRANCE TRAP DOOR	TRAP DOORS
3	820-1425	3/8" X 1 3/4" BOLT	TRAP DOORS
4	870-1705	3/8" FLAT WASHER	TRAP DOORS
5	870-1350	3/8" LOCK WASHER	TRAP DOORS
6	OU-0005-1	BRACKET AND WHEEL ASSEMBLY	EXIT TRAP DOOR



Rail Cover

Illustration & Part



Item No.	Part No.	Description	Related to:
1	160-2010	1/4" X 2" X 2" Red Rail Cover	Rail Cover
2	860-1114	1" Tek Screw	Rail Cover

Hydraulic Power Pack

Illustration & Part



Item No.	Part No.	Description	Related to:
1	405-3005	1/2" Speed Flow Control Valve	Hydraulic Power Pack
2	005-0011	HYDRAULIC OIL FILTER, 10HP	Hydraulic Power Pack
3	005-0010	HYDRAULIC OIL FILTER, 15HP 20HP	Hydraulic Power Pack
4	210-6196	10HP Power Pack Pump	Hydraulic Power Pack
5	520-1745-A	Power Pack Pump	Hydraulic Power Pack
6	470-1500	2½" LIQUID GUAGE (2000 PSI)	Hydraulic Power Pack



N/S Corporation

VEHICLE WASHING EQUIPMENT • ESTABLISHED 1961

www.nswash.com

235 West Florence Avenue
Inglewood, California 90301

800-782-1582

Parts: Ext. **3**

Service: Ext. **2**

Fax: **310.412.1196**



Due to Continuous research N/S Corporation reserves the right to upgrade or change at any time, specifications, or designs without notice and without incurring any obligations.

Copyright © 2019 NS Corporation.

**COMPANY WITH
QUALITY SYSTEM
CERTIFIED BY DNV GL
= ISO 9001 =**