

# Series**3000**



**800.782.1582**  
Toll free  
310.412.1196 fax  
**www.nswash.com**

**Leaders in the  
Transit Wash Industry  
Since 1961**

Due to Continuous research N/S Corporation reserves the right to upgrade or change at any time, specifications, or designs without notice and without incurring any obligations. Copyright © 2010 NS Corporation.

Series3000-3100.pdf Revision:02 April 2013



**www.nswash.com**



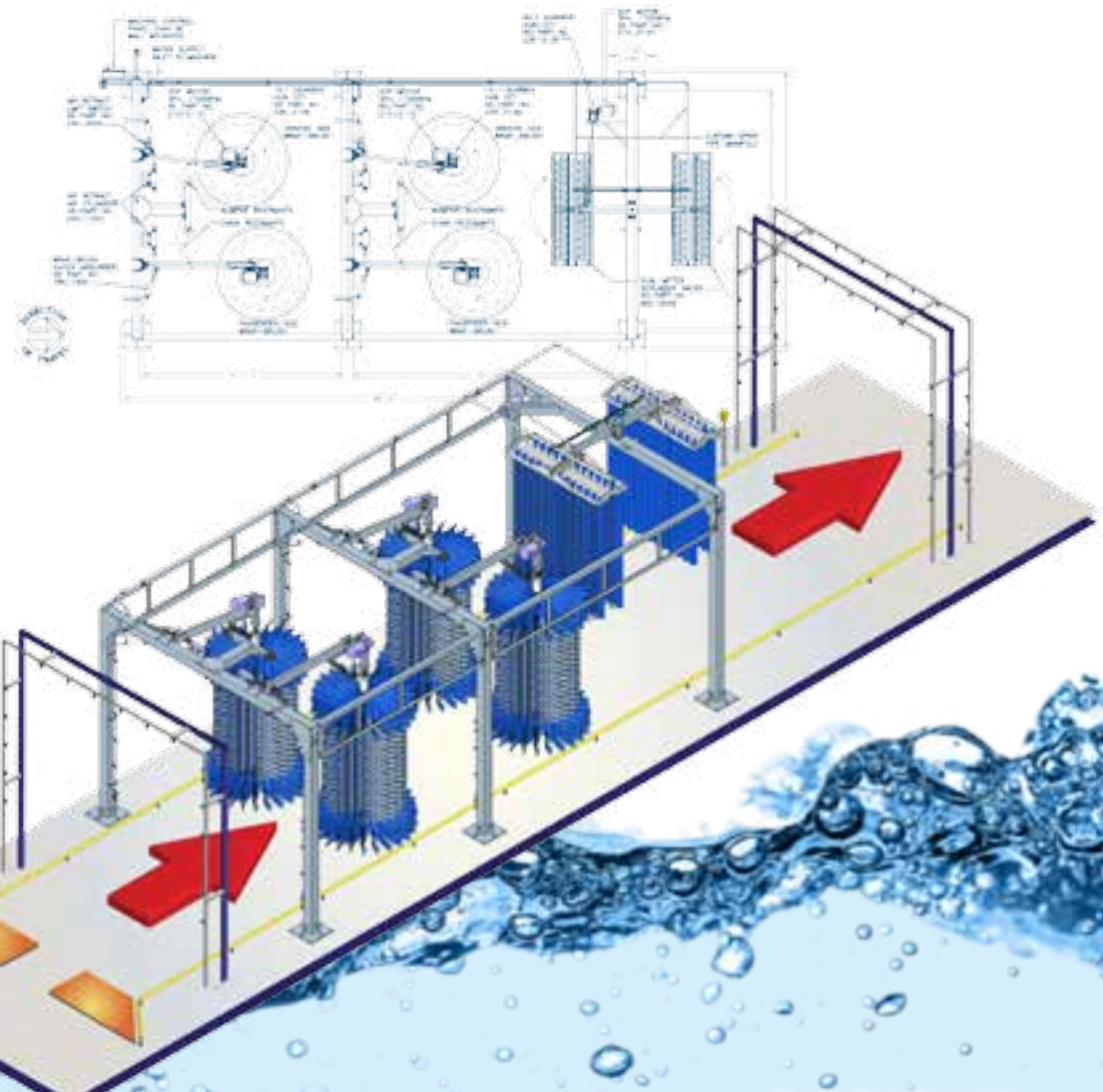


# SYSTEM 3000

## The System 3000

Originally designed to clean as many as 80 buses per hour. Many of these systems are currently cleaning 300+ buses per day.

Two sets of Wrap-A-Round brushes clean the front, sides and rear of each bus twice. Double overhead scrubbers clean roofs thoroughly while leaving lights and antennas unharmed.



### System Includes:

- Skid Plates
- Vehicle Counter
- Activation System
- Detergent Container
- 7-Inch Curb Rail System
- Detergent Injection System
- Detergent Applicator Front To Rear
- 4 Wrap-A-Round Cleaning Scrubber: Segmented & Contoured To Meet Vehicle Configuration
- Oscillating Double Top Scrubber With Lammscloth
- Dual Final Rinse Arch
- Motor Control System (UL Approved)

### Power Requirements:

Voltage (5) 2HP:  
480V 3Ø 17.0FLA  
240V 3Ø 34.0FLA  
208V 3Ø 37.5FLA

### Air Line:

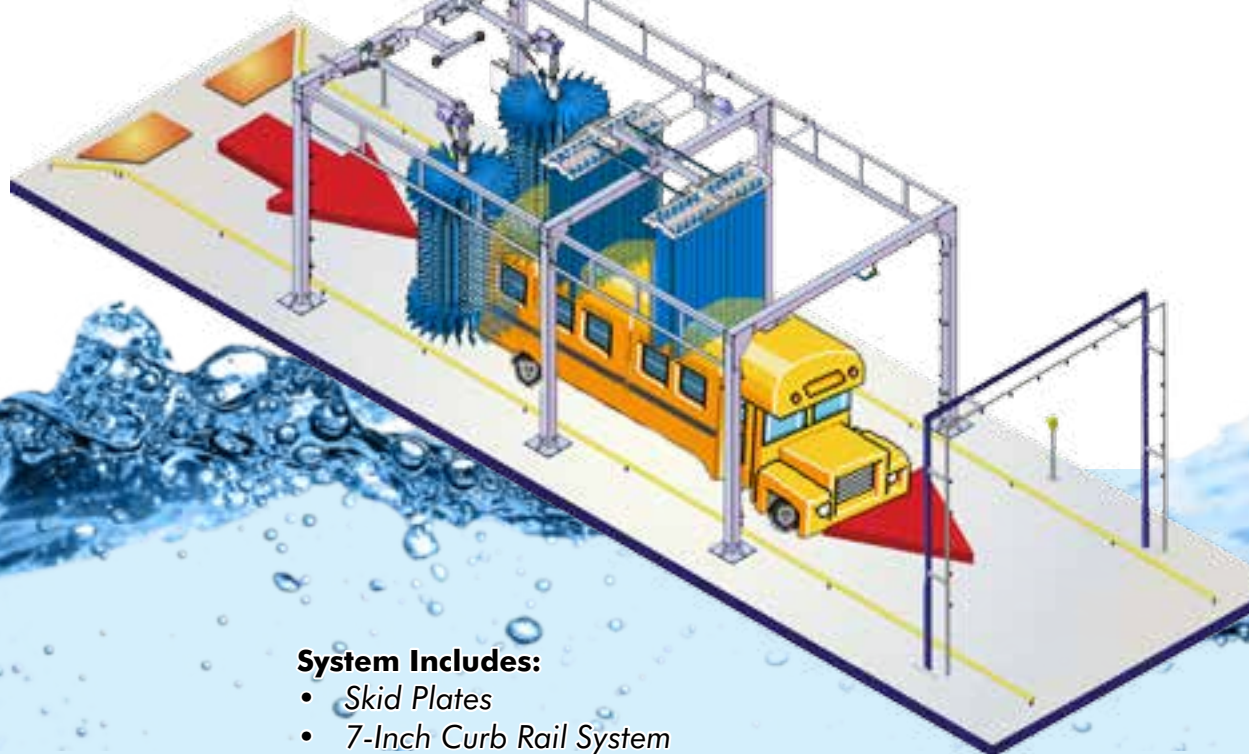
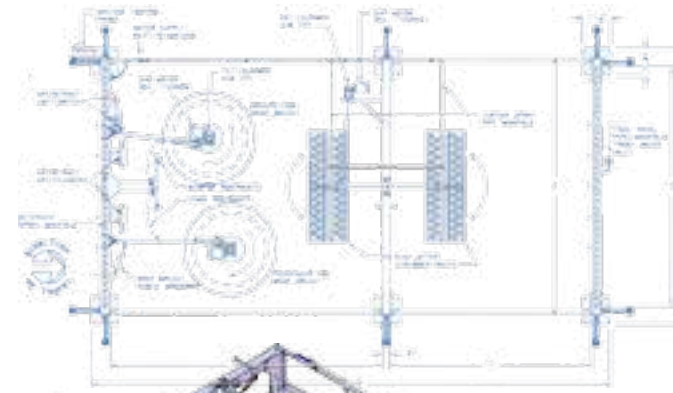
1" (2.54 cm) 100 psi @ 6 SCFM

### Water Requirements:

Provide 2.00" main cold water line (without water recycling system)

## The System 3100

Originally designed for school buses, the 3100 uses a rugged 6-legged frame & ultra-high molecular density polyethylene bearings. An air retract system is used to protect important crossover mirrors. A double overhead scrubber gently and thoroughly cleans the roof, and is safe for antennas and lights.



### System Includes:

- Skid Plates
- 7-Inch Curb Rail System
- Activation System
- Detergent Pre-Application Arch
- Detergent Injection System
- 2 Wrap-A-Round Cleaning Scrubbers: Segmented & Contoured to Meet Vehicle Configuration
- Air Retraction System With Automatic Activation
- Oscillating Double Top Scrubber
- Final Rinse Applicator Arch
- Vehicle Counter
- Motor Control System (UL Approved)

### Power Requirements:

Voltage (3) 2HP:  
480V 3Ø 10.2FLA  
240V 3Ø 20.4FLA  
208V 3Ø 22.5FLA

### Air Line:

1" (2.54 cm) 100 psi @ 6 SCFM

### Water Requirements:

Provide 2.00" main cold water line (without water recycling system)

# SYSTEM 3100

### Vehicle Clearance:

Height = 12' (3.66 m)  
Width = 9' (2.74 m)

### Min. Bay Requirements:

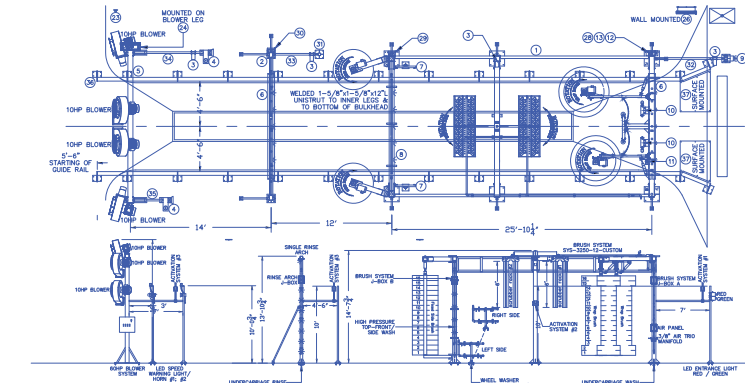
Height = 16' (4.88 m)  
Width = 18' (5.49 m)  
Length = 45' (15.24 m)

# SYSTEM 3250

## The System 3250

Originally designed to clean as many as 80 buses per hour. Many of these systems are currently cleaning 300+ buses per day.

Two sets of Wrap-A-Round brushes clean the front, sides and rear of each bus twice. Double overhead scrubbers clean roofs thoroughly while leaving lights and antennas unharmed.



### Power Requirements:

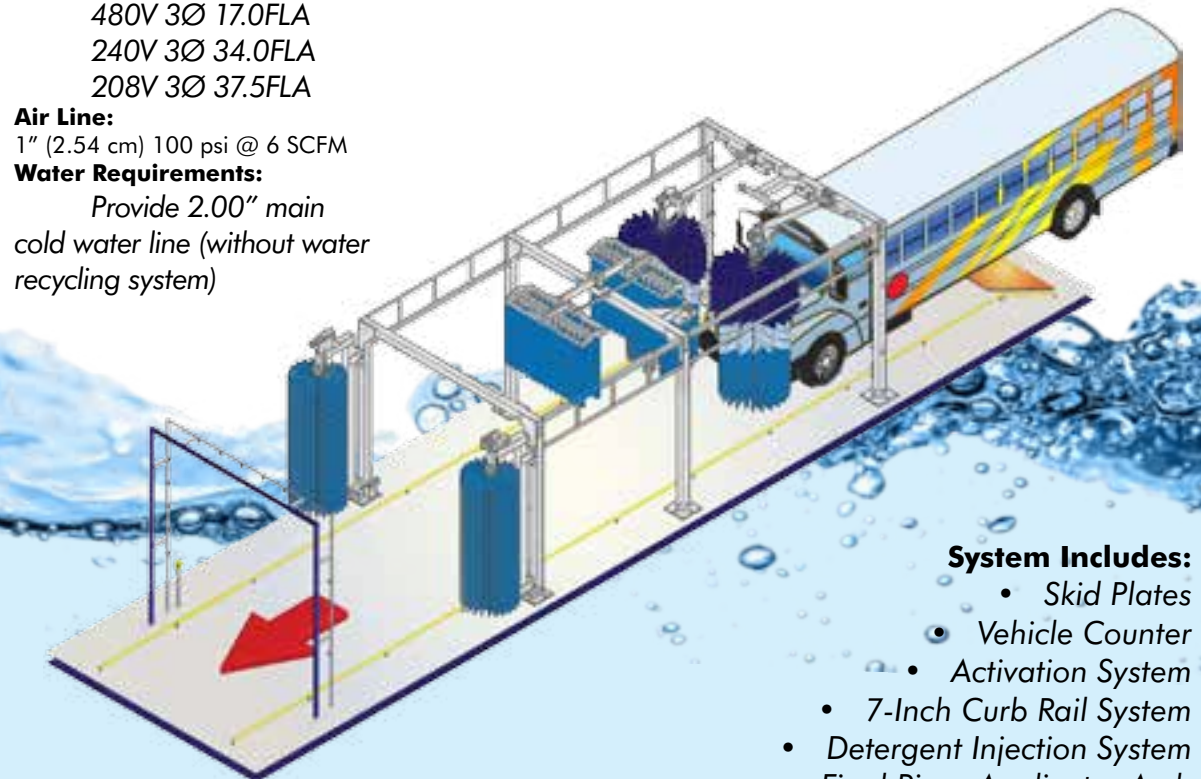
Voltage (5) 2HP:  
480V 3Ø 17.0FLA  
240V 3Ø 34.0FLA  
208V 3Ø 37.5FLA

### Air Line:

1" (2.54 cm) 100 psi @ 6 SCFM

### Water Requirements:

Provide 2.00" main cold water line (without water recycling system)



### System Includes:

- Skid Plates
- Vehicle Counter
- Activation System
- 7-Inch Curb Rail System
- Detergent Injection System
- Final Rinse Applicator Arch
- Detergent Pre-Application Arch
- Oscillating Double Top Scrubber
- Air Retraction System With Automatic Activation
- 2 Wrap-A-Round Cleaning Scrubbers: Segmented & Contoured To Meet Vehicle Configuration
- Motor Control System (UL Approved)